



SENTRYLINE - M[®] **WIRE ROPE TERMINAL END**

Anchoring cables for Sentryline - M[®] Wire Rope Barrier System

Product and Installation Manual
Australia version

Please call ACP on 1800 724 172
or visit www.acprod.com.au
for more information

February 2025

SMARTER SAFETY SOLUTIONS



ACP

AUSTRALIAN CONSTRUCTION PRODUCTS

Product & Installation Manual: Sentryline - M[®] Wire Rope Terminal End

Table of contents

Introduction	4
System Overview	4
Limitations and Warnings	5
Before Installation	6
Safety statements	6
General Safety	6
Sentryline - M [®] Wire Rope Terminal End Safety Statements	6
Geotechnical Warning	6
Limited Warranty	7
Design Considerations	8
Kerbs	8
Undulating Ground Conditions	8
Flare Rate	8
Clearzones	8
Tension	8
Line Posts	8
System Design	9
Foundation Options	10
Length of Need (LoN)	11
Parts Identification	12
Installation Preparation	16
Getting Started	16
Preparation	16
Soil Conditions	16
Tools Required	17
Bill of Materials	18
Installation Instructions	19
Step 1 – Site Preparation	19



Product & Installation Manual: Sentryline - M[®] Wire Rope Terminal End

Step 2 – Installing barrier Transition Line Posts	19
Step 3a - Installing the Ground Base Frame (pile foundation option)	20
Step 3b - Installing the Ground Base Frame (concrete block foundation option)	22
Step 4 – Attaching the barrier cables to Transition Line Posts	23
Step 5 – Attaching the anchor cables	24
Step 6 - Trigger post and Deflection Post assembly	25
Step 7 – Tensioning the cables	27
Step 8 – Delineation	27
Installation Checklist	28
Frequently Asked Questions	29
Appendix - Technical Drawings	31
Sentryline - M [®] Wire Rope Terminal End General Arrangement	32
Sentryline - M [®] Wire Rope Terminal End Concrete Block Foundation Option	33
Sentryline - M [®] Wire Rope Terminal End Concrete Block Foundation Option - Alternative 1	34
Sentryline - M [®] Wire Rope Terminal End Concrete Block Foundation Option - Alternative 2	35
Sentryline - M [®] Wire Rope Terminal End Piled Foundation Option	36
Sentryline - M [®] Wire Rope Barrier to Semi-rigid Barrier Transition Detail	37
Sentryline - M [®] Wire Rope Terminal End Overlapping Detail	38
Typical Installation for Sentryline - M [®] Wire Rope Barrier System Line Post	39
Typical Installation for Transition Line Post #6	40
Typical Installation for Transition Line Post #1-#4	41
Sentryline - M [®] Wire Rope Terminal End Clearzone	42
Sentryline - M [®] Wire Rope Terminal End and Sentryline - M [®] Barrier System General Arrangement	43
Sentryline - M [®] Half Tie Installation Procedure	44
Sentryline - M [®] Wire Rope System Hold Down Assembly 4xM20x1000L 130CRS	45
Sentryline - M [®] Wire Rope System Hold Down Assembly 4xM20x2000L 130CRS	46



ACP may make changes to this Product Manual from time to time. Please check the ACP website prior to using this Product Manual to ensure that you have the latest version.

Product & Installation Manual: Sentryline - M[®] Wire Rope Terminal End

Introduction

The Sentryline - M[®] Wire Rope Terminal End is used to anchor the high tensioned four-cable Sentryline - M[®] Wire Rope Barrier System. The terminal end features a unique assembly of trigger post, deflection post and connecting rail (patent pending) for added safety during end-on motor vehicle impact collisions. The Sentryline - M[®] Wire Rope Terminal End can be installed with either a piled or concrete block footing to suit ground conditions on site and the installers preferences.

The Sentryline - M[®] Wire Rope Terminal End has been designed and tested to meet the evaluation criteria of MASH 2016 Test Level 3 (TL-3) and can be used to anchor the Sentryline - M[®] Wire Rope Barrier which is a MASH 2016 TL-3 and TL-4 product.

System Overview

The Sentryline - M[®] Wire Rope Terminal End is designed and constructed to provide acceptable structural adequacy, minimal occupant risk and a safe trajectory as set forth in the 'Manual for Assessing Safety Hardware (MASH)' 2nd edition MASH 2016 for cable barrier terminal ends.

When impacted with an 1100kg and 2270kg vehicle at speeds of 100kph, due to the partial de-tensioning of the cables, the errant vehicle is prevented from vaulting or rolling which is common in terminal ends where cables remain fully tensioned during impact.

During end-on impacts the trigger post is impacted first, it engages the deflection post through the connecting rail and all cables partly de-tension instantaneously. During reverse angle impacts, the trigger post, deflection post and connecting rail fold sideways, preventing the cables from snagging on the front of the impacting vehicle.

The Length of Need (LoN) of the Sentryline - M[®] Wire Rope Terminal End is 13.5m downstream from the Deflection Post (DP) in Figure C which is physically at the 5th Transition Line Post (TLP5).

Product & Installation Manual: Sentryline - M[®] Wire Rope Terminal End

Limitations and Warnings

The Sentryline - M[®] Wire Rope Terminal End has been rigorously tested and evaluated per the evaluation criteria in the MASH 2016 guidelines for gating cable barrier terminal ends. The impact conditions recommended in MASH 2016 are intended to address typical in-service collisions.

The Sentryline - M[®] Wire Rope Terminal End allows a safe trajectory for the impacting vehicle under the MASH 2016 impact conditions. It is imperative that the system is installed as per the manufacturers' specification.

Vehicle impacts that vary from the MASH 2016 impact conditions described for cable barrier terminal ends, may result in significantly different results than those experienced in testing. Vehicle impact characteristics different than, or in excess of, those encountered in MASH 2016 testing (weight, speed and angle) may result in system performance that may not meet the MASH 2016 evaluation criteria.

The Road Controlling Authority guidelines may in some cases take precedence over the installation details contained in this manual – especially in terms of the positioning of the terminal end and the foundations specification.

Product & Installation Manual: Sentryline - M[®] Wire Rope Terminal End

Before Installation

Design, selection and placement of the Sentryline - M[®] Wire Rope Terminal End shall be in accordance with the Road Controlling Authority's guidelines and the details shown in the construction drawings. Installation shall be in accordance with the installation instructions supplied for this product.

NOTE: Concrete foundations will have to be designed by a local geotechnical engineer if soil conditions on site do not meet the required level described in the manual.

Depending on the application and circumstances at the site, installation and assembly of the system should take one person around 30-45 mins once the concrete foundations are poured and set.

The Sentryline - M[®] Wire Rope Terminal End is a highly engineered safety device made up of a relatively small number of parts. Before starting installation ensure that one is familiar with the makeup of the terminal end.

Safety statements

General Safety

- > All required traffic safety precautions should be complied with. All workers should wear required safety clothing. (Examples, and not limited to, include: high visibility vests, steel capped footwear, gloves etc.)
- > Only authorised trained personnel should operate any machinery. Where overhead machinery is used, care must be taken to avoid any overhead hazards.
- > Before drilling or excavation always ensure that the area is clear of underground services. (The appropriate service providers may need to be contacted).

Sentry Barrier - M Safety Statements

- > All installers must be well clear of drilling or excavating machinery operating.
- > The components are not heavy enough to require specialised lifting equipment, but due to the dimensions and bulky nature, care should be taken when lifting the larger components into position. If the ground strut and rebar cage assembly is assembled prior to installation, suitable lifting equipment will be required.
- > Avoid placing hands or fingers in and around moving machine parts when components are being lifted and manoeuvred into place.

Geotechnical Warning

The Sentryline - M[®] Wire Rope Terminal End concrete foundations require sufficient strength from the supporting soil and guidelines contained within this manual on foundation sizes relate specifically to the corresponding soil strength. If it is determined that soil conditions on site do not meet or exceed these requirements, alternative size foundations must be designed by a local geotechnical engineer for use at that location.



Product & Installation Manual: Sentryline - M[®] Wire Rope Terminal End

Limited Warranty

Australian Construction Products (ACP) has tested the impact performance of its barriers and crash cushion systems, and other highway safety hardware under controlled conditions, however, ACP does not represent nor warrant that the results of those controlled conditions would necessarily avoid injury to persons or property.

ACP EXPRESSLY DISCLAIMS ANY WARRANTY OR LIABILITY FOR CLAIMS ARISING BY REASONS OF DEATH OR PERSONAL INJURY OR DAMAGE TO PROPERTY RESULTING FROM ANY IMPACT, COLLISION OR HARMFUL CONTACT WITH THE PRODUCTS OR NEARBY HAZARDS OR OBJECTS BY ANY VEHICLE, OBJECTS OR PERSONS.

ACP warrants that any product or component part manufactured by ACP will be free from defects in material or workmanship. ACP will replace free of cost any Product or component part manufactured by ACP that contains such a defect.

THE FOREGOING WARRANTY IS IN LIEU OF AND EXCLUDES ALL OTHER WARRANTIES NOT EXPRESSLY SET FORTH HEREIN, WHETHER EXPRESS OR IMPLIED BY OPERATION OF LAW OR OTHERWISE, INCLUDING BUT NOT LIMITED TO ANY IMPLIED WARRANTIES OF MERCHANTABILITY OR FITNESS FOR A PARTICULAR PURPOSE. ACP'S LIABILITY UNDER THIS WARRANTY IS EXPRESSLY LIMITED TO REPLACEMENT FREE OF COST OF PARTS SUPPLIED BY ACP ONLY (IN THE FORM AND UNDER THE TERMS ORIGINALLY SHIPPED), OR TO REPAIR OR TO MANUFACTURE BY ACP, PRODUCTS OR PARTS NOT COMPLYING WITH ACP SPECIFICATIONS, OR, AT ACP'S ELECTION, TO THE REPAYMENT OF AN AMOUNT EQUAL TO THE PURCHASE PRICE OF SUCH PRODUCTS OR PARTS, WHETHER SUCH CLAIMS ARE FOR BREACH OF WARRANTY OR NEGLIGENCE. ACP SHALL NOT BE LIABLE FOR ANY

INCIDENTAL, CONSEQUENTIAL OR SPECIAL LOSSES, DAMAGES OR EXPENSES OF ANY KIND, INCLUDING, WITHOUT LIMITATION, ANY SUCH LOSSES, DAMAGES OR EXPENSES ARISING DIRECTLY OR INDIRECTLY FROM THE SALE, HANDLING OR USE OF THE PRODUCTS FROM ANY OTHER CAUSE RELATING THERETO, OR FROM PERSONAL INJURY OR LOSS OF PROFIT.

Any claim by the Buyer with reference to Products sold hereunder for any cause shall be deemed waived by the Buyer unless ACP is notified in writing, in the case of defects apparent on visual inspection, within ninety (90) days from the delivery date, or, in the case of defects not apparent on visual inspection, within twelve (12) months from the said delivery date. Products claimed to be defective may be returned prepaid to ACP's plant for inspection in accordance with return shipping instructions that ACP shall furnish to the Buyer forthwith upon receipt of the Buyer's notice of claim. If the claim is established, ACP will reimburse that Buyer for all carriage costs incurred hereunder.

The forgoing warranty benefits shall not apply to (i) any Products that have been subject to improper storage, accident, misuse or unauthorised alterations, or that have not been installed, operated and maintained in accordance with approved procedures and (ii) any components manufactured by the Buyer.

Product & Installation Manual: Sentryline - M[®] Wire Rope Terminal End

Design Considerations

Kerbs

As with all road side safety hardware, the Sentryline - M[®] Wire Rope Terminal End has been designed and tested so that the centre of gravity of the impacting vehicle is at a constant height in relation to the system. For this reason, it is preferred that kerbs or channels are not in front or behind the terminal end as they will result in altering the height of the vehicle at impact. If there is no option but to install near a kerb, advice should be followed from the Road Controlling Authority's guidelines.

Undulating Ground Conditions

Site specific grading may be necessary to ensure that there are no 'humps' or 'hollows' that may significantly alter the impacting vehicles stability or substantially alter the cable heights in relation to the ground. The Ground Base Frame is required to lay flush with the foundation piles and must not protrude more than 100mm from ground level, when measured using a 1500mm cord pulled along the centreline of the anchor assembly.

Flare Rate

The preference is to not flare the system. If this is unavoidable then the maximum flare rate should be 30:1 over the entire length of the terminal end.

Clearzone

The Sentryline - M[®] Wire Rope Terminal End is a gating, non-energy absorbing terminal end and therefore requires a clearzone directly behind as recommended by Road Controlling Authority guidelines. The minimum size of the clearzone should be an area 22.5m long by 6m wide, reasonably traversable and free from fixed object hazards. (See drawing in Appendix on Page 38).

Tension

The Sentryline - M[®] Wire Rope Terminal End is designed to anchor to the 4 of the high tensioned cable barriers. Please refer to the relevant literature for instructions on how to tension the barrier that is being installed.

NOTE: Do NOT tension a barrier for 7 days after the foundation piles have been cast.

Line Posts

The 8 Transition Line Posts (**TLP1, TLP2, TLP3, TLP4, TLP5** and 3 x **TLP6** in Figure C) that make up the remainder of the Sentryline - M[®] Wire Rope Terminal End are to be installed as per the instructions in the Sentryline - M[®] Wire Rope Barrier installation manual. The first TLP1 is to be installed 1.5m away from the deflection post, the remaining TLP are to be installed at 3m centres.

Product & Installation Manual: Sentryline - M[®] Wire Rope Terminal End

System Design

Foundation Options

Sentryline - M[®] Wire Rope Terminal End anchors the barrier cables relying on the interaction of the concrete foundation and the surrounding soil conditions on site. Soil conditions have various characteristics that may affect the strength of the concrete foundations.

IF SOIL CONDITIONS ON SITE DO NOT MEET OR EXCEED THE REQUIRED STRENGTH DETAILED IN THIS MANUAL, SITE SPECIFIC FOUNDATIONS MUST BE DESIGNED BY A GEOTECHNICAL ENGINEER.

NOTE: Additional technical information required to assist in designing a site-specific foundation is available from ACP.

The Sentryline - M[®] Wire Rope Terminal End has two approved concrete foundation systems – drilled piles and excavated concrete block footings. Both foundation options have been designed for the ground conditions that meet AASHTO standard specifications M 147: grading A or B.

The Sentryline - M[®] Wire Rope Terminal End is delivered with 12 x 2.0m long M20 threaded bars which are installed and arranged differently depending on whether a piled or concrete block foundation is used – see drawings in Appendix on Page 32 - 36. For the concrete block foundation 6 x threaded rods need to be cut in half with a disc grinder.

Product & Installation Manual: Sentryline - M[®] Wire Rope Terminal End

Terminal End Foundation Options

Piled Foundation (Figure A)	Concrete Block Foundation (Figure B)
3 x 500mm \varnothing x 2500mm	2.3m L x 1.5m W x 1.0m D
	3.4m L x 1.0m W x 1.0m D
	3.4m L x 1.5m W x 0.74m D

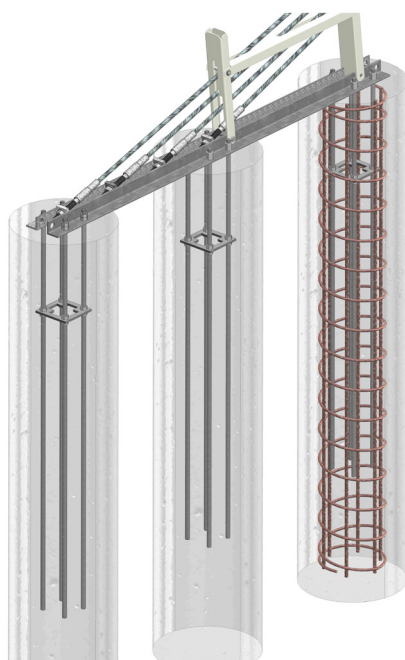


Figure A

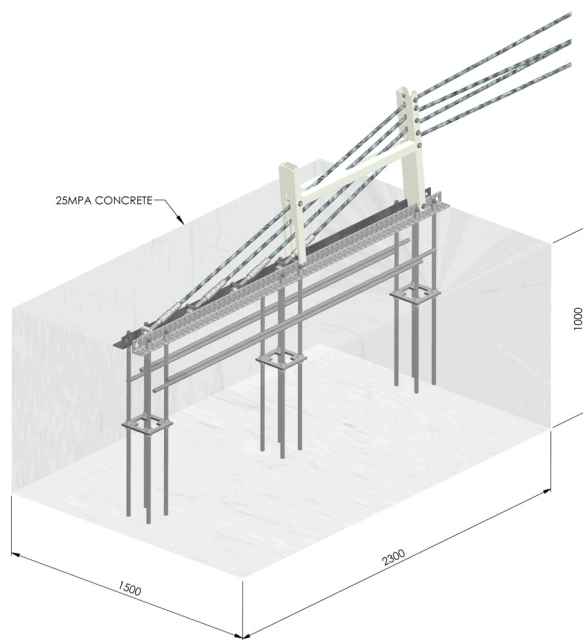


Figure B

Alternative 1
FX748-4

+

Alternative 2
FX748-5

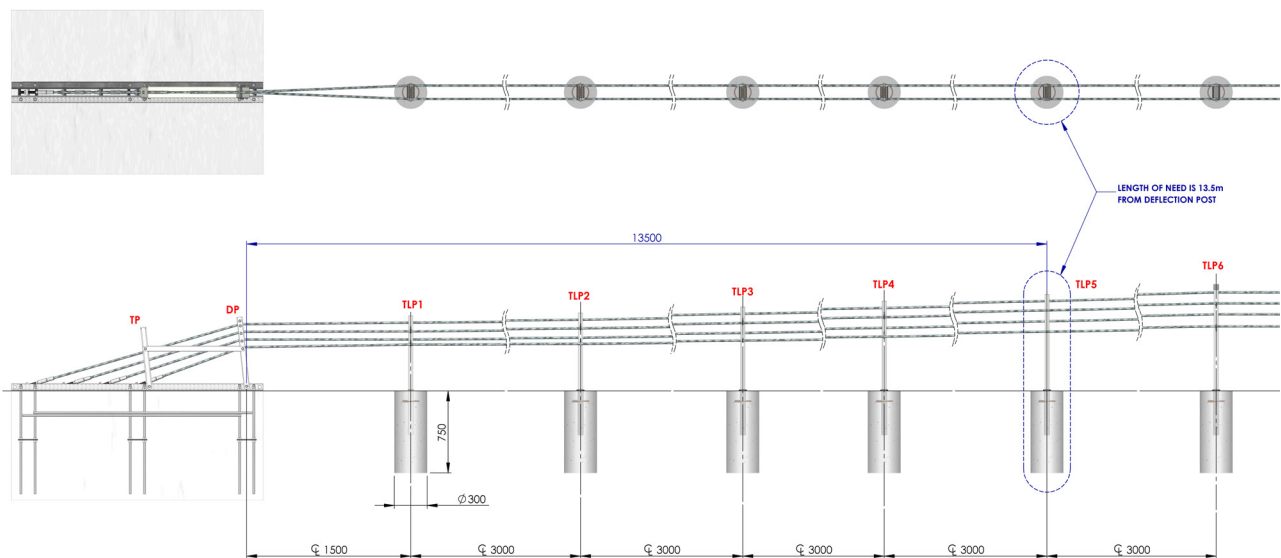
Product & Installation Manual: Sentryline - M[®] Wire Rope Terminal End

Length of Need (LoN)

The Length of Need (LoN) for the Sentryline - M[®] Wire Rope Barrier connected to a Sentryline - M[®] Wire Rope Terminal End is the length of the barrier designed to contain and re-direct errant vehicles. The LoN distance from the cable anchorage is determined by the point at which the barrier has re-directed the 2270kg vehicle impacting at 100kph and 25 degree angle (MASH test 3-35).

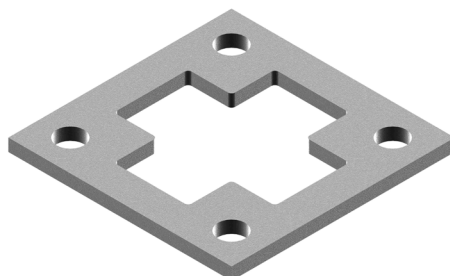
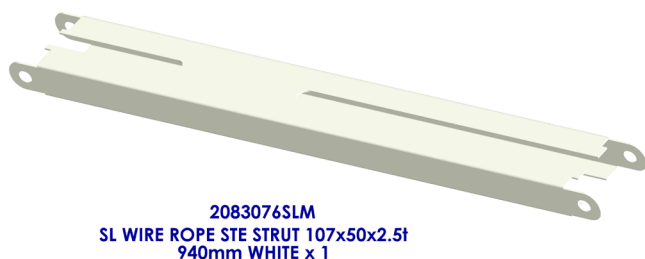
The LoN of the Sentryline - M[®] Wire Rope Terminal End is 13.5m downstream from the Deflection Post (DP) which is physically at TLP5, see figure C.

NOTE: As per the LoN design section of the Road Controlling Authority's guidelines, care must be taken when calculating the actual length of the barrier required versus the theoretical length of the LoN.



Product & Installation Manual: Sentryline - M[®] Wire Rope Terminal End

Parts Identification



Product & Installation Manual: Sentryline - M[®] Wire Rope Terminal End

Parts Identification (cont.)



A153 x 4
SL WIRE ROPE SWAGE
FITTING M24



2083072SLM x3
SL WIRE ROPE LINEPOST CAP



S-004 x 8
SL WIRE ROPE REBAR
RING SMOOTH



2083131SLM-A x3
SL WIRE ROPE LINEPOST 1370mm
WHITE - 4 SLOTS
TLP6



[Include in A153] x 4
BNW WASHER ROUND
M24x50x3 GALV



2083070SLM x 8
SL WIRE ROPE POST SOCKET



[Include in A153] x 4
BNW ENG NUT M24
GALV 4.6



2110161 x 48
BNW ENG NUT M20
GALV 4.6



S-003 x 8
SL WIRE ROPE LINEPOST
O-RING 5mm



2110162SLM x28
SL WIRE ROPE HALF TIE
O-RING 5mm

Product & Installation Manual: Sentryline - M[®] Wire Rope Terminal End

Parts Identification (cont.)



2083078SLM x 1
SL WIRE ROPE STE TRANSITION
POST 1 1086mm WHITE
TLP1



2083079SLM x 1
SL WIRE ROPE STE TRANSITION
POST 2 1112mm WHITE
TLP2



2083080SLM x 1
SL WIRE ROPE STE TRANSITION
POST 3 1167mm WHITE
TLP3



2080223SLM x 1
SL WIRE ROPE STE TRANSITION
POST 4 1220mm WHITE
TLP4



2083130SLM x 1
SL WIRE ROPE STE TRANSITION
POST 5 1283mm WHITE
TLP5




2083071CSLM x 1
SL WIRE ROPE REINFORCING CAGE 2325L
RQUIRED FOR PILE FOUNDATION ONLY

Product & Installation Manual: Sentryline - M® Wire Rope Terminal End

ITEM NO.	PART NO.	DESCRIPTION	QTY.	WEIGHT EA.	DWG. NO.
1	2083/S35M	SL WIRE ROPE STE TANGLER POST 1.920mm WHITE	1	3.46	PX298-4
2	2083/S35M	SL WIRE ROPE STE STRUT 102x60x3.8 50mm WHITE	1	3.95	PX298-5
3	2083/S35M	SL WIRE ROPE STE ORIENTATION POST 1.600mm WHITE	1	2.88	PX298-6
4	2083/S25M	SL WIRE ROPE STE GROUND ANCHOR FRAMING 230mm GALV	3	30.77	PX299/PX299-1
5	2083/S25M	SL WIRE ROPE STE TOLD DOWRY ASSEMBLY 400x100x10.5 350x85	6	19.29	PX299-1
6	2083/S25M	ENVIRONMENTAL PROTECTIVE COATING 1.5L	6	0.21	
7	2083/S25M	BRV WING BOLT 1.6 12x17x145 130 GALV 6/8	2	0.23	
8	2083/S25M	BRV WING BOLT 1.6 12x17x145 130 GALV 6/8	4	0.11	
9	(Refer to A150)	ENV WASHERS 20x16x2 GALV	4	0.03	
10	(Refer to A150)	SL WIRE ROPE STE SWAGE FITTING 16x4	4	1.54	
11	A153	AS REQUIRED			
12	S-003	SL WIRE ROPE 16mm DIA	AS REQUIRED		PX247-4
13	2083/S25M	SL WIRE ROPE POST SOCKET	8	0.41	PX248-1
14	2083/S25M	SL WIRE ROPE SITE TRANSITION POST 1.120mm WHITE	1	6	PX248-2
15	2110/S25M	SL WIRE ROPE HALF TIE 8mm ALUMINUM	28	0.04	PX247-5
16	S-003	SL WIRE ROPE LINEPOST 20 RING 5.33mm	8	0.01	PX248-2
17	S-004	SL WIRE ROPE REBAR RING SMOOTH	8	0.34	PX248-2
18	2083/S25M	SL WIRE ROPE STE TRANSITION POST 2.1120mm WHITE	1	6	PX248-3
19	2083/S25M	SL WIRE ROPE STE TRANSITION POST 3.1167mm WHITE	1	6	PX248-4
20	2082/S25M	SL WIRE ROPE STE TRANSITION POST 4.1220mm WHITE	1	6	PX248-5
21	2083/S25M	SL WIRE ROPE STE TRANSITION POST 5.1283mm WHITE	1	7	PX248-1
22	2083/S25M	SL WIRE ROPE LINEPOST 1920mm WHITE - 4 SLOTS	3	7	PX249-1
23	2083/S25M	SL WIRE ROPE LINEPOST CAP	3	0.05	PX249-3

TOLERANCES	CLIENT	ITEM	DRAWING NUMBER	DRAWN	APPROVED
Whole Numbers #2	SENTRYLINE-M WIRE ROPE END UNIT	WHITE-CONCRETE BLOCK OPTION BOM	FX748-1	E.A.	CHECKED
One Decimal Place #10.6	MATERIAL				
Bend Angle : #2	STEEL TO AS/NZS 1594				
Straightness : 1.5per1500	FINISH				
Scale: N.T.S.	PRETREATMENT TO AS 1627				
	HOT DIP GALVANISE TO AS/NZS 4680				

	<p>ACP AUSTRALIAN CONSTRUCTION PRODUCTS Australian Construction Products Pty Ltd 339 Horsley Road Milperra NSW 2214 P.O. Box 565 Panania NSW 2213 Tel: +61 2 9772 4172 Fax: +61 2 9792 6272</p>		
REV	DESCRIPTION	APPD	DATE
A	ORIGINAL ISSUE	EA	11.06.20



Product & Installation Manual: Sentryline - M[®] Wire Rope Terminal End

Installation Preparation

Getting Started

The Sentryline - M[®] Wire Rope Terminal End is a cable barrier terminal end designed to anchor four cables of the Sentryline - M[®] Wire Rope Barrier. For all installations, whether median or edge of road locations, the installation should start with setting out the position of the foundation. The Sentryline - M[®] Wire Rope Terminal End must be correctly located in relation to both the Sentryline - M[®] Wire Rope Barrier it is anchoring and the roadway.

Preparation

Before installing a Sentryline - M[®] Wire Rope Terminal End, ensure that all components required for the system are on site and have been identified. The Sentryline - M[®] Wire Rope Terminal End is a highly engineered safety device made up of relatively small number of parts. Before starting installation ensure that one is familiar with the make-up of the system. Refer to the **Bill of Materials** and **Parts Identification** sections in this manual for more information.

Ensure that the area where the Sentryline - M[®] Wire Rope Terminal End is to be installed is flat enough so that the Ground Base Frame will not protrude more than 100mm from ground level, when measured using a 1500mm cord pulled along the centreline of the anchor assembly.

Minor site grading may be required.

Soil Conditions

The Sentryline - M[®] Wire Rope Terminal End foundation piles have been designed to withstand a constant static load and dynamic impact load that can be exerted on it from the tensioned barrier cables. It is extremely important that the Sentryline - M[®] Wire Rope Terminal End has the required strength to anchor the cable barrier.

It is recommended that soil tests are carried out at the location the Sentryline - M[®] Wire Rope Terminal End is to be installed.

IF SOIL CONDITIONS ON SITE DO NOT MEET OR EXCEED THE REQUIRED STRENGTH DETAILED IN THIS MANUAL, SITE SPECIFIC FOUNDATIONS MUST BE DESIGNED BY A LOCAL GEOTECHNICAL ENGINEER.



Product & Installation Manual: Sentryline - M[®] Wire Rope Terminal End

Tools Required

The following tools will be required to complete a typical Sentryline - M[®] Wire Rope Terminal End installation:

- > Drilling machinery (piled option) or excavator (concrete block option)
- > M16, M20 and M24 open wrenches
- > M24 ring spanner
- > Measuring tape
- > String line
- > Concrete trowel or float
- > ACP Swaging Unit for Swage Fittings.



Product & Installation Manual: Sentryline - M[®] Wire Rope Terminal End

Bill of Materials

Item No.	Part No.	Description	Total Qty per	DWG No.
0	2083091SLM	SL Wire Rope Terminal End Unit White	1	FX748
1	2083133SLM	SL Wire Rope Ste Trigger Post 570mm White	1	FX750-4
2	2083076SLM	SL Wire Rope STE Strut 107x50x2.5t 940mm White	1	FX750-5
3	2083077SLM	SL Wire Rope STE Deflection Post 660mm White	1	FX750-3
4	2083032SLM	SL Wire Rope STE Ground Base Frame 2300mm GALV	1	FX750, FX750-1
5	2110839SLM	SL Wire Rope STE HDA Baseplate 180x180x10 4M20 130C.R.S	3	FX751-1
6	2110230H	BNW Fully Threaded Rod M20x2000L GALV	12	
7	2110161	BNW Eng Nut M20 GALV 4.6	48	
8	2081130A	BNW Eng Bolt & 1/2Nut M16x110 GALV 8.8	6	
9	2081131	BNW Eng Bolt & 1/2Nut M16x120 GALV 8.8	2	
10	[Included in A153]	BNW Eng Nut M24 GALV 4.6	4	
11	[Included in A153]	BNW Washer Round M24x50x3 GALV	4	
12	A153	SL Wire Rope Self Swage Fitting M24	4	
13	S-001G	SL Wire Rope 19mm Dia	As required	
14	2083070SLM	SL Wire Rope Post Socket	8	FX747-4
15	2083078SLM	SL Wire Rope STE Transition Post 1 1086mm White	1	FX749-1
16	2110162SLM	SL Wire Rope Half Tie 8mm Aluminium	28	FX747-2
17	S-003	SL Wire Rope Linepost O-Ring 5mm	8	FX747-5
18	S-004	SL Wire Rope Rebar Ring Smooth	8	
19	2083079SLM	SL Wire Rope STE Transition Post 2 1112mm White	1	FX479-2
20	2083080SLM	SL Wire Rope STE Transition Post 3 1167mm White	1	FX749-3
21	2080223SLM	SL Wire Rope STE Transition Post 4 1220mm White	1	FX749-4
22	2083130SLM	SL Wire Rope STE Transition Post 5 1283mm White	1	FX749-5
23	2083131SLM-A	SL Wire Rope Linepost 1370mm White - 4 Slots	3	FX747A-1
24	2083072SLM	SL Wire Rope Linepost Cap	3	FX747-3

Product & Installation Manual: Sentryline - M[®] Wire Rope Terminal End

Installation Instructions

Step 1 – Site Preparation

It is preferred that the Sentryline - M[®] Wire Rope Terminal End be installed on flat, level ground. The Sentryline - M[®] Wire Rope Terminal End starts at the last post of the cable barrier and the setup is always the same configuration over the length of the terminal.

The Sentryline - M[®] Wire Rope Terminal End is a continuation of the cable barrier and should be installed in a tangent position. If this is not possible, a maximum flare rate of 30:1 is accepted.

Step 2 – Installing barrier transition line posts

The 8 Transition Line Posts (**TLP1, TLP2, TLP3, TLP4, TLP5** and 3 x **TLP6** in Figure G) are to be installed as per the instructions in the Sentryline - M[®] Wire Rope Barrier installation manual. The TLP1 is to be installed 1.5m away from the Sentryline - M[®] Wire Rope Terminal End deflection post, the remaining transition line posts are to be installed at 3m centres (see Appendix on page 30).

It is critical that the transition line posts be inserted into sockets in the correct sequence – starting from the Sentryline M[®] Wire Rope Terminal End: (**TLP1, TLP2, TLP3, TLP4, TLP5** and 3 x **TLP6** posts).

**BEFORE DRILLING OR EXCAVATION
ALWAYS ENSURE THAT THE AREA IS
CLEAR OF UNDERGROUND SERVICES.**

Product & Installation Manual: Sentryline - M[®] Wire Rope Terminal End

Step 3a - Installing the Ground Base Frame (pile foundation option)

Drill three 450mm diameter, 2.5m deep holes for piles, at the correct location and spaced at 1.0m centres (as shown in Figure D). Install four M20 threaded rods in the boltholes of the HDA baseplate and lock their position with nuts top and bottom, refer to drawing 'FX751-2' SENTRYLINE-M WIRE ROPE BARRIER STE HOLD DOWN ASSEMBLY 4xM20x2000L 130CRS, in the APPENDIX section. Attach the top end of the rods through the boltholes in the Terminal End Frame angles and lock their position with nuts top and bottom. Lower the cages into drilled holes so that the HDA baseplate is located around 400mm below top of concrete and the Ground Base Frame is not protruding more than 100mm above ground level. Fill the holes with 25MPa concrete ensuring there are no air pockets and the bottom face of the Ground Base Frame is in contact with concrete (as shown in Figure E). Trowel the top surface of concrete so that it gently falls away



Figure D

from the frame.

Product & Installation Manual: Sentryline - M[®] Wire Rope Terminal End

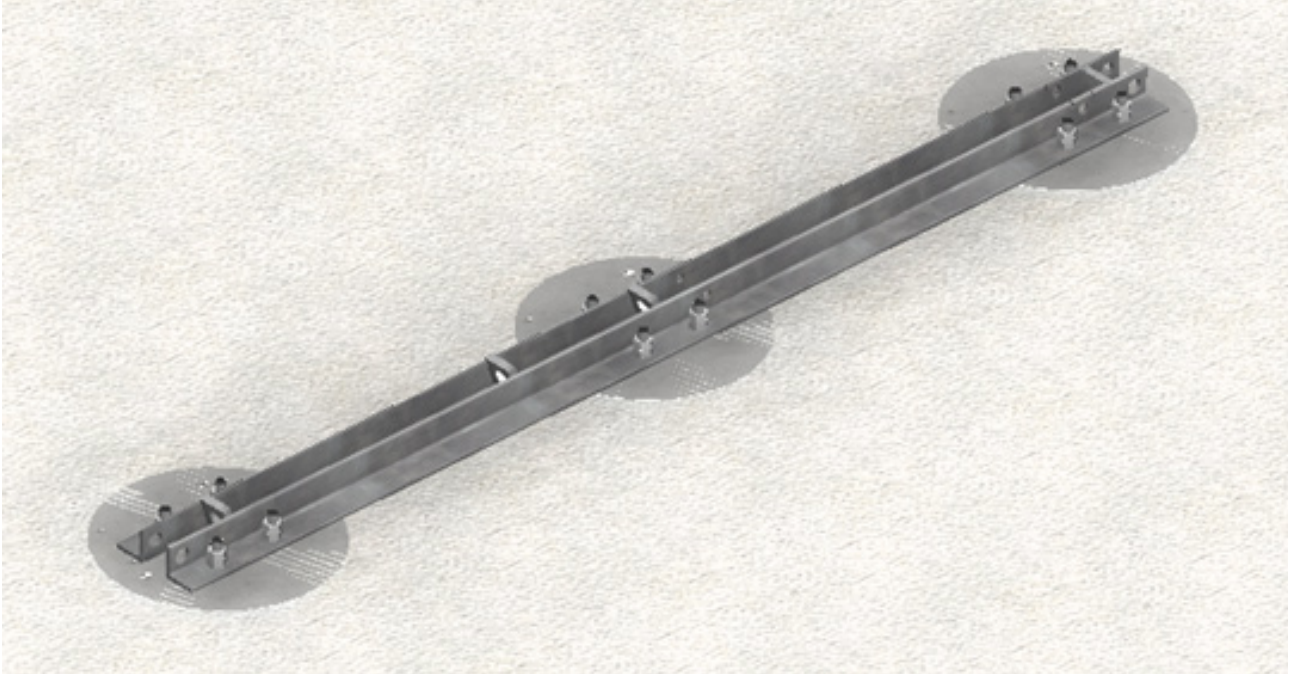


Figure E

Product & Installation Manual: Sentryline - M[®] Wire Rope Terminal End

Step 3b - Installing the Ground Base Frame (concrete block foundation option)

- > Excavate a hole 2.3m long, 1.5m wide and 1.0m deep at the correct location. If alternative block is required, refer to appendix for details.
- > Cut 6 x 2m long M20 threaded rods in half, unless pre-supplied by manufacturer.
- > Put the 1m long rods through boltholes of the HDA baseplate (uncut end up) and lock their position with nuts top and bottom.
- > Attach the top end of the rods through the boltholes in the Ground Base Frame angles and lock their position with nuts top and bottom. Refer to drawing 'FX751' SENTRYLINE-M WIRE ROPE BARRIER STE HOLD DOWN ASSEMBLY 4xM20x1000L 130CRS, in the APPENDIX section.
- > Tie 4 x full length rods.
- > Thread the remaining two full length rods through 25mm diameter holes at the ends of

the Ground Base Frame.

- > Place packers on the sides of the hole so that the bottom of the Ground Base Frame is flush with the top of concrete.
- > Lower the Ground Base Frame into hole so that the HDA baseplate is located around 400mm below top of concrete and the Ground Base Frame is not protruding more than 100mm above ground level.
- > Fill the hole with 25MPa concrete ensuring there are no air pockets and the bottom face of the Ground Base Frame is in contact with concrete (see Figure F).
- > Trowel the top surface of concrete so that it gently falls away from the frame.

The theoretical volume of concrete required to construct the concrete block option of the Sentryline - M[®] Wire Rope Terminal End footing is 3.45m³. Alternative anchor block foundations, have different volumes, refer to the specific anchor block drawing to determine the volume.

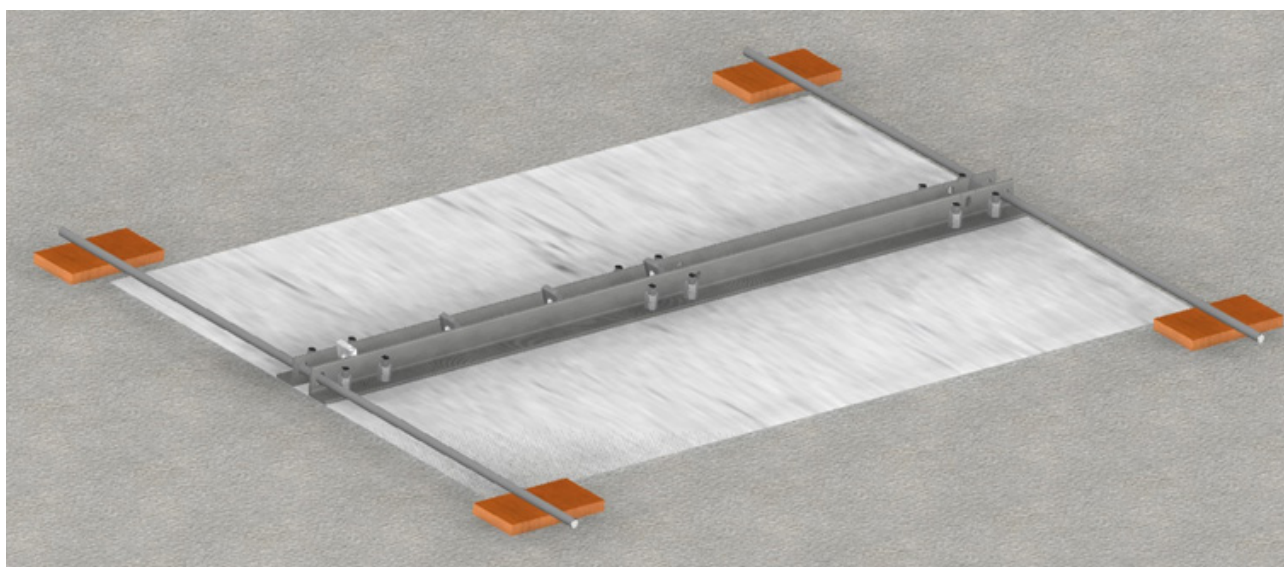


Figure F

Product & Installation Manual: Sentryline - M[®] Wire Rope Terminal End

Step 4 – Attaching the barrier cables to transition line posts

- > Three Transition Line Posts TLP6 have four aluminium Half Ties installed in the side slots in the upright position.
- > Transition Line Post TLP5 has no side slots and no Half ties.
- > Transition Line Posts TLP1, TLP2, TLP3 and TLP4 have four Half Ties installed in the side slots in the upside-down position.

The barrier cables can be attached to the transition line posts either before or after anchoring the cables to the Ground Base Frame (see figure G). In many cases it will be most convenient to attach the cables to the three Transition Line Posts TP6 before anchoring them and install the half ties on Transition Line Posts TP1, TP2, TP3 and TP4 after the cables have been anchored (see appendix on page 42 for Half Tie Installation procedure).

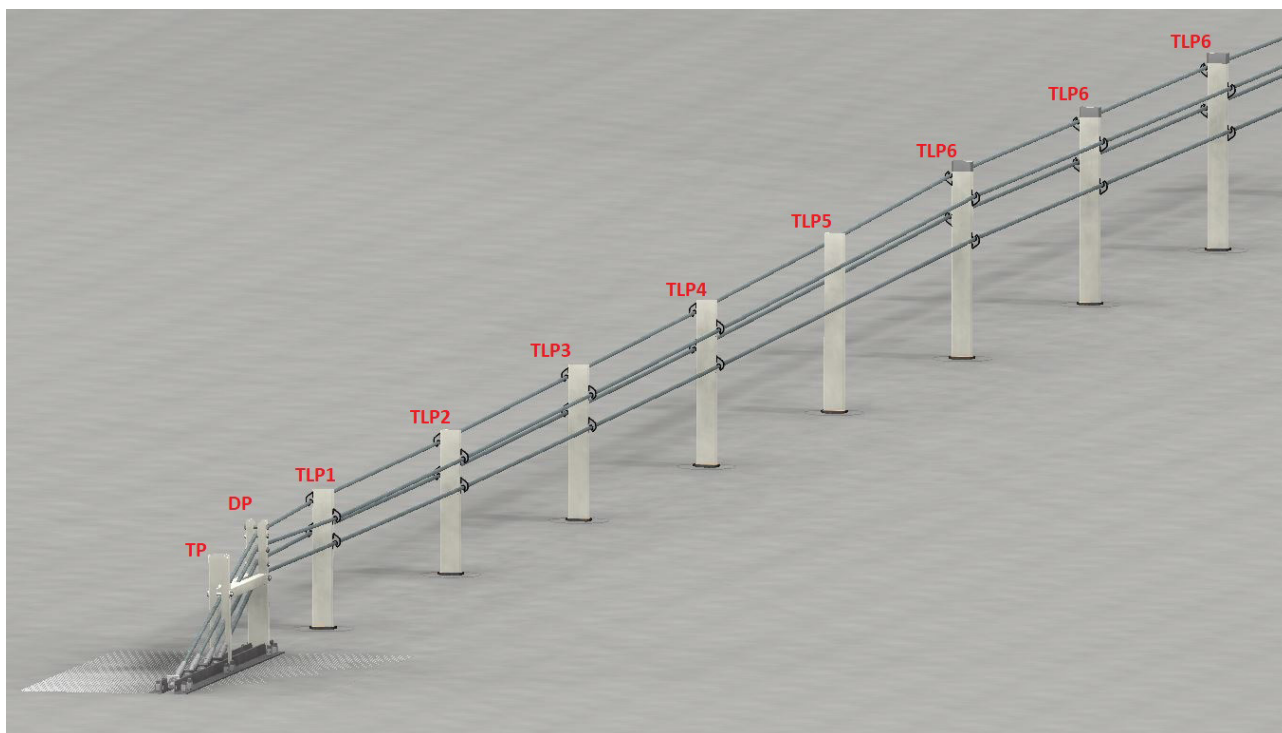


Figure G

Product & Installation Manual: Sentryline - M[®] Wire Rope Terminal End

Step 5 – Attaching the anchor cables

Cables can be attached with caution when the concrete has sufficiently set to secure the position of the Ground Base Frame. The cables must not be tensioned for at least 7 days after concrete pour. Ensure the swage fittings have been installed as per the Sentryline - M[®] Wire Rope Barrier installation manual.

Insert the M24 ends of the swage fittings in the holes in the Anchor Blocks welded between the Ground Base Frame angles.

Lock the swage fittings by tightening the M24 nuts – ring spanner may have to be used on the end nut as shown in Figure H.

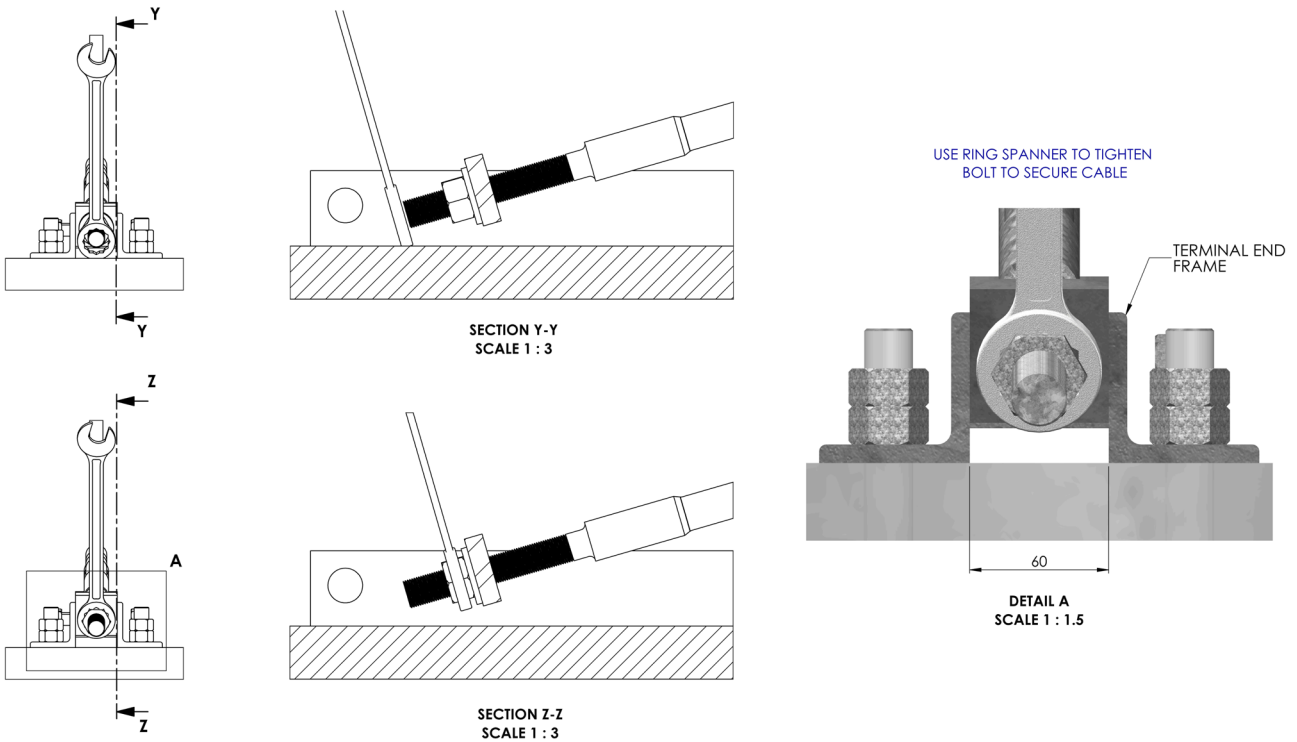


Figure H



Product & Installation Manual: Sentryline - M[®] Wire Rope Terminal End

Step 6 - Trigger post and deflection post assembly

Attach the trigger post by placing it over the cables and bolting the base to Ground Base Frame with a M16x110mm bolt with half nut supplied in the kit (see Figure I). Then attach the deflection post by sliding it under the cables and bolting the base to Ground Base Frame with a M16x110mm bolt with half nut supplied in the kit as shown in Figure J.

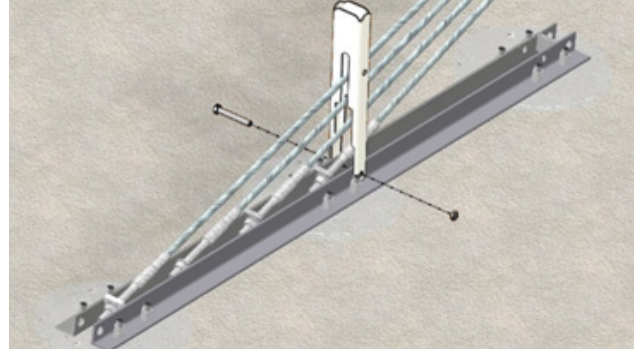


Figure I

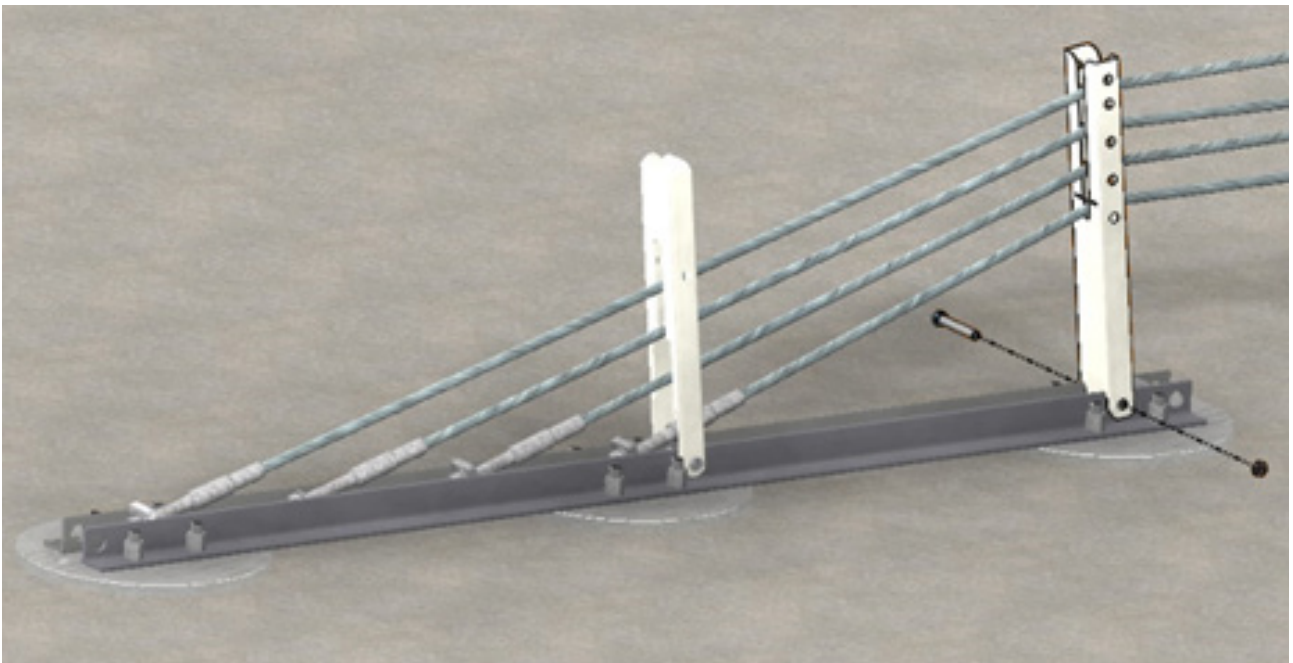


Figure J

Product & Installation Manual: Sentryline - M[®] Wire Rope Terminal End

Rotate both posts close to vertical position and install the connecting strut by sliding it sideways between cables #3 and #4 and levelling it so that the boltholes at the end of the strut align with the boltholes in the posts.

Attach the strut to posts by bolting with M16x120mm bolts with half nuts supplied in the kit. The bolt on the trigger post should fit above the top cable, the bolt on the deflection post should be under the bottom cable (see Figure L).

Install the three M16x110mm bolts under the top three cables as shown in Figure K. Adjust the position of the assembly so that the posts are leaning back at around 8 degrees (the notches at the bottom of the deflection post bearing on the Ground Base Frame should naturally produce the required lean).



Figure K

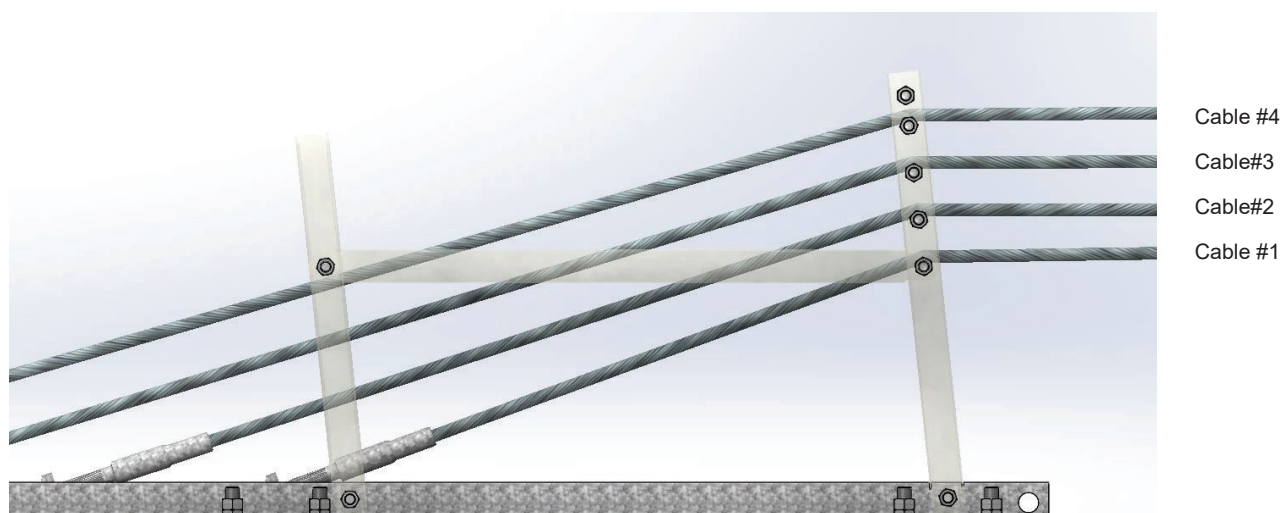


Figure L

Product & Installation Manual: Sentryline - M[®] Wire Rope Terminal End

Step 7 – Tensioning the cables

Cables must not be tensioned until at least 7 days after the concrete pour. Start by tensioning the bottom cable using the method described in the Sentryline - M[®] Wire Rope Barrier installation manual. After the bottom cable has been tensioned re-adjust the position of the trigger post and deflection post assembly so that it leans back at around 8 degrees before tensioning the remaining three cables. The trigger post deflection post assembly may need to be re-adjusted again as the remaining three cables are being tensioned.

Step 8 – Delineation

Delineation may be required as per the Road Controlling Authority guidelines.

For further details including type, location and placement contact the local state Road Controlling Authority or ACP.

Product & Installation Manual: Sentryline - M[®] Wire Rope Terminal End

Installation Checklist

Item	Y	N
Site soil conditions checked and appropriate anchor foundation installed to suit.		
Ground is level and the Ground Base Frame does not protrude more than 100mm when measured using a 1500mm cord along its centreline.		
The M20 nuts holding the Ground Base Frame to the foundation are spanner tight .		
At least one thread is showing above the nuts holding the Ground Base Frame to the foundation.		
The 3mm thick steel round washer and M24 Nut has been used to fix the anchor cables to the upstream end of the Ground Base Frame.		
The elongated slots in the Strut are positioned in the correct orientation. Longer slot is located towards the Deflection post.		
The anchor cables are firmly held in the body of the anchor plates on the Ground Base Frame and the M24 nuts at the upstream end of the ground strut are spanner tight .		
The plastic socket for Transition Line Posts are cast in correctly and a rebar ring is positioned 100mm down from the top for all Transition Line Posts .		
All posts are spaced as per the construction drawings .		
Posts are installed with slot orientation consistent for entire length of the terminal end.		
All Transition Line Posts have been installed in the correct sequence .		
An o-ring seal is positioned on all Transition Line Posts at the top of the socket .		
TLP6 has a plastic cap inserted in the top.		
Three Transition Line Posts, TLP6 have four aluminium Half Ties installed in the upright position , TLP5 has no cables ties, Transition line posts TLP1, TLP2, TLP3 and TLP4 have four Half Ties installed in the side slots in the upside-down position .		

Job Number:			
Location:			
Client/Asset Owner:			
Principal Contractor:			
Installer:			
Installed by:		Date	
Inspected by:		Date	

Contact ACP for more information on this or other road safety products.



Product & Installation Manual: Sentryline - M[®] Wire Rope Terminal End

Frequently Asked Questions

1. What type of equipment is required to install the Sentryline - M[®] Wire Rope Terminal End?

Standard tools required include a set of wrenches, measuring tape, string line and trowel. Machinery suitable for drilling or excavating the foundations.

2. How much concrete is required to install the concrete foundations on an S.T.E and what strength does it need to be?

The theoretical volume of concrete required to construct the piled option of the Sentryline - M[®] Wire Rope Terminal End footing is 1.47m³. The theoretical volume of concrete required to construct the concrete block option of the Sentryline - M[®] Wire Rope Terminal End footing is 3.45m³. Due to uneven excavation surfaces the actual volume of concrete used to construct the footings may be more than specified above. The concrete used must be 25MPa.

Note: Other foundation sizes and types might be required due to on site soil conditions. Concrete volume requirements will vary accordingly. Refer to appendix for additional anchor foundation options.

3. Is there a curing period for the concrete before the barrier can be tensioned?

Yes, do not tension until at least 7 days after the concrete footings have been poured.

4. Does your company provide spare parts? What is the lead-time for supply?

It is important to fix a damaged cable barrier as soon as possible because it most probably won't perform as required when damaged. For this reason, it is recommended that spares are held by

Maintenance Contractors. (The concrete footings and Ground Base Frame are highly unlikely to be damaged).

5. On average, how long does it take to install a Sentryline - M[®] Wire Rope Terminal End?

Depending on circumstances at the site, installation and assembly of the system should take one person crew around 30-45mins once the concrete foundations are poured and set.

6. What about vandalism, can the Sentryline - M[®] Wire Rope Terminal End be easily damaged?

No, once the system has been tensioned it is an extremely rigid system and tampering without the use of heavy duty tools or machinery is very unlikely to damage or affect the performance of the system.

7. How easily can the Sentryline - M[®] Wire Rope Terminal End and Sentryline - M[®] Wire Rope Barrier be restored after impact?

The system is easily repaired after impact as the foundations and the Ground Base Frame should not be damaged in anyway. Damaged transition posts can be removed using a crow bar and new ones positioned in the sockets before the cables and caps are repositioned. It is recommended that the cable tension is checked after impact. If the system has been de-tensioned due to damage to the trigger post deflection post assembly, a hydraulic tension machine and trained personnel will be required to re-tension the system after the trigger post deflection post assembly is replaced.



Product & Installation Manual: Sentryline - M[®] Wire Rope Terminal End

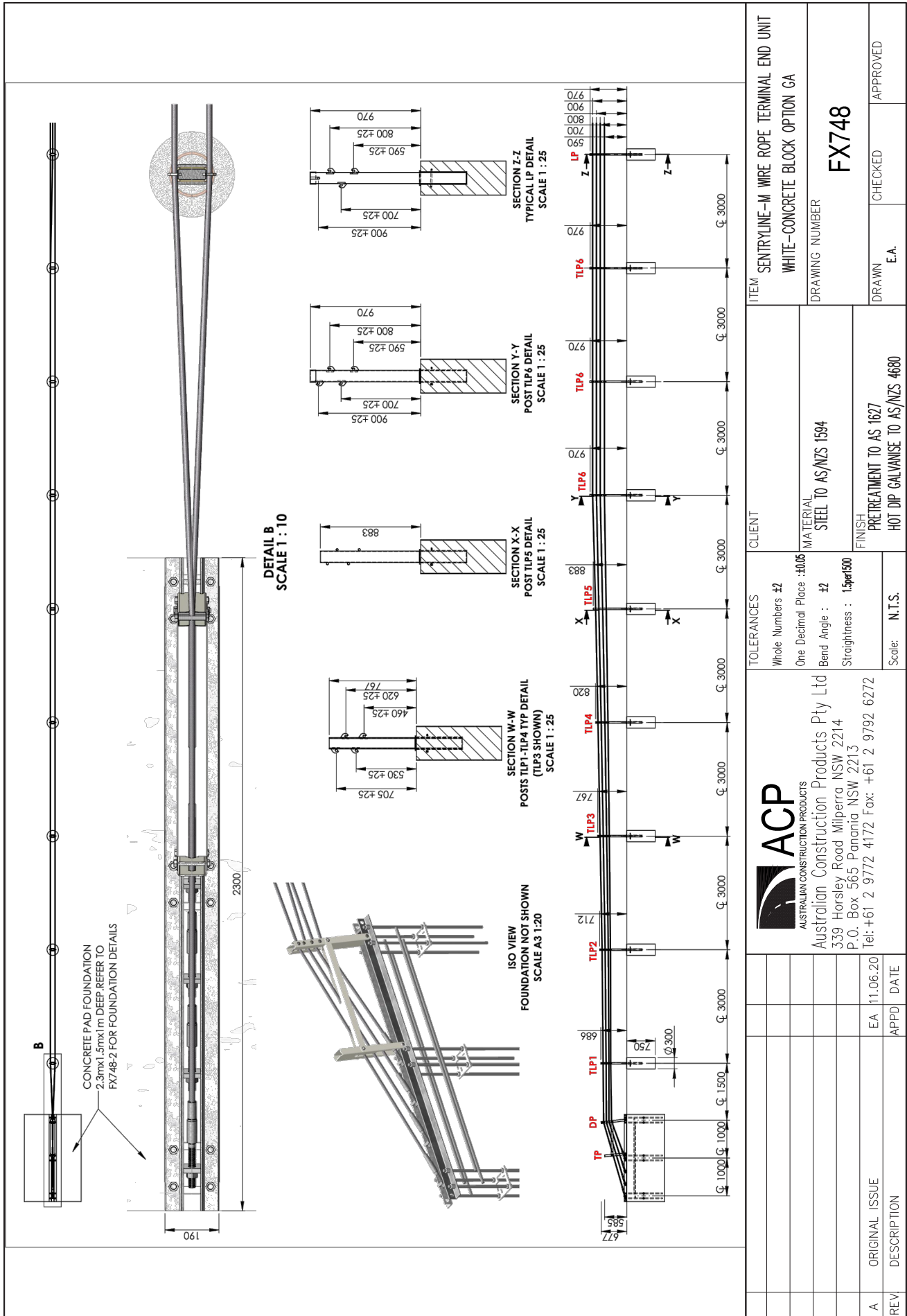
8. What maintenance does the S.T.E require?

The Sentryline - M[®] Wire Rope Terminal End terminal end is maintenance free as the anchor cables used are pre-stretched. Refer to the Sentryline - M[®] Wire Rope Barrier Installation & Product Manual for recommendations on maintenance for the cable barrier itself which includes cable tension checking.

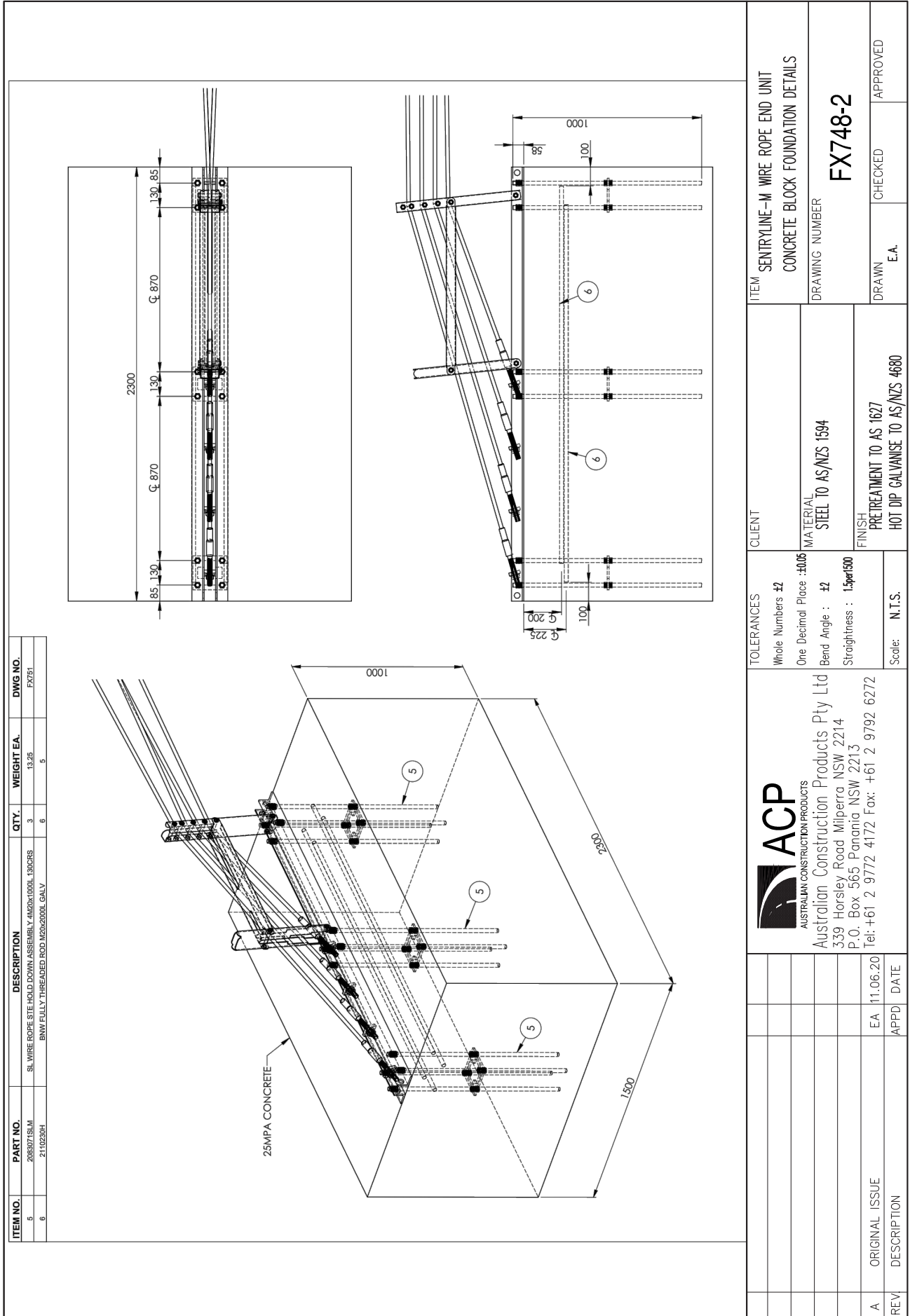
APPENDIX

Technical Drawings

Sentryline - M[®] Wire Rope Terminal End General Arrangement

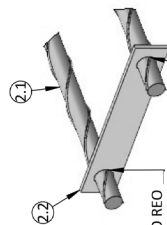


Sentryline - M[®] Wire Rope Terminal End Concrete Block Foundation Option



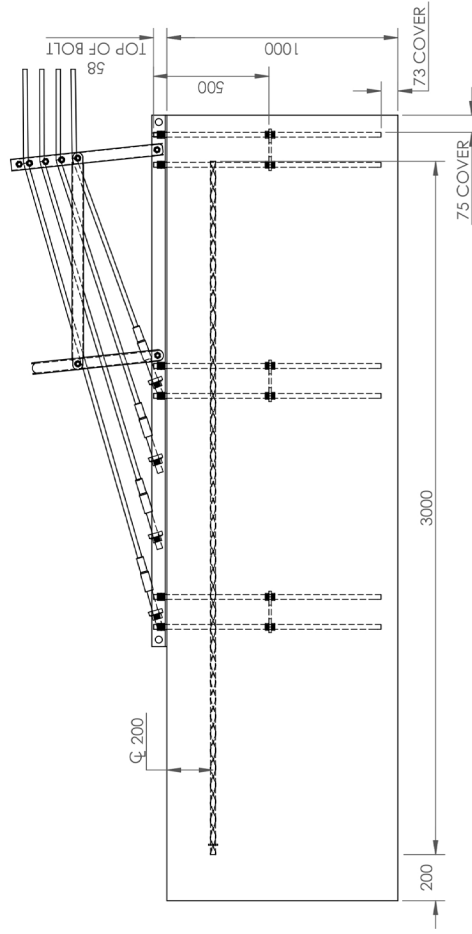
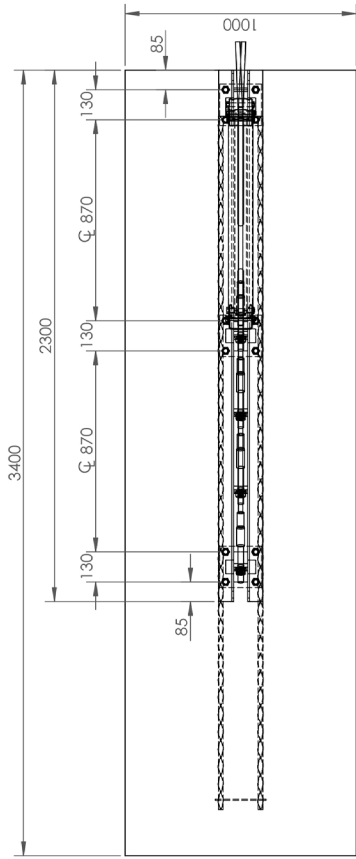
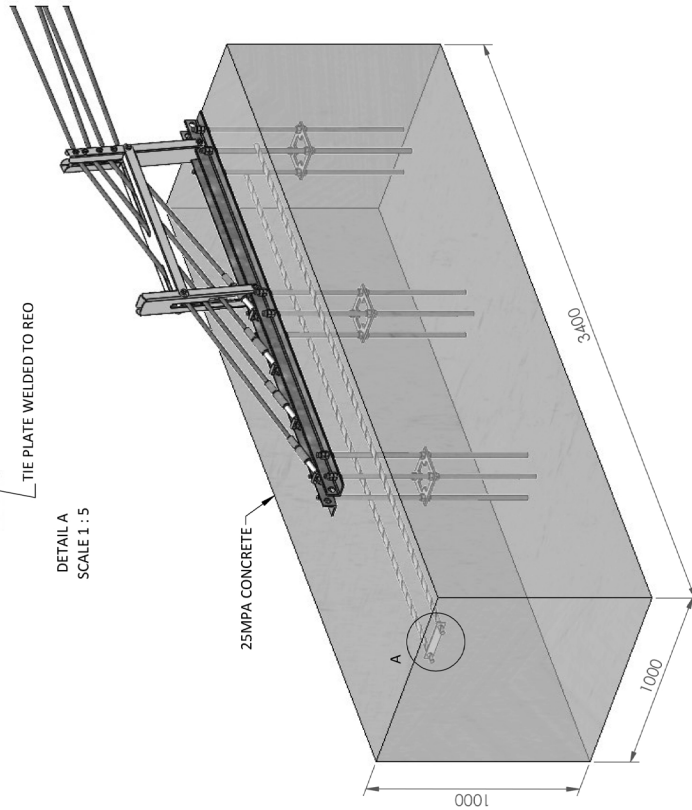
Sentryline - M[®] Wire Rope Terminal End Concrete Block Foundation Option - Alternative 1

ITEM NO.	PART NO.	DESCRIPTION	QTY.	WEIGHT EA. (KG)	DWG NO.
1		SL WIRE ROPE STE HOLD DOWN ASSEMBLY 4M20X985L 130CRS	3	13.1	
1.1	2110839SLM	SL WIRE ROPE STE HDA BASEPLATE 180X180X10 4M20 130C.R.S	1	1.5	FX751-1
1.2		BNW FULLY THREADED ROD M20X985 GALV	4	2.7	
1.3	2110161	BNW ENG NUT M20 GALV 4.6	16	0.05	
2	ASM-002	SL WIRE ROPE 3M REO BAR WELD ASSEMBLY	1	15.3	FX748-6
2.1	PRT-002	FL REO BAR HD20 3M LONG	2	7.5	
2.2	PRT-003	FL TIE PLATE 220 X 40 X 5mm BLACK	1	0.3	



TIE PLATE WELDED TO REO
TIE PLATE WELDED TO REO

DETAIL A
SCALE 1 : 5

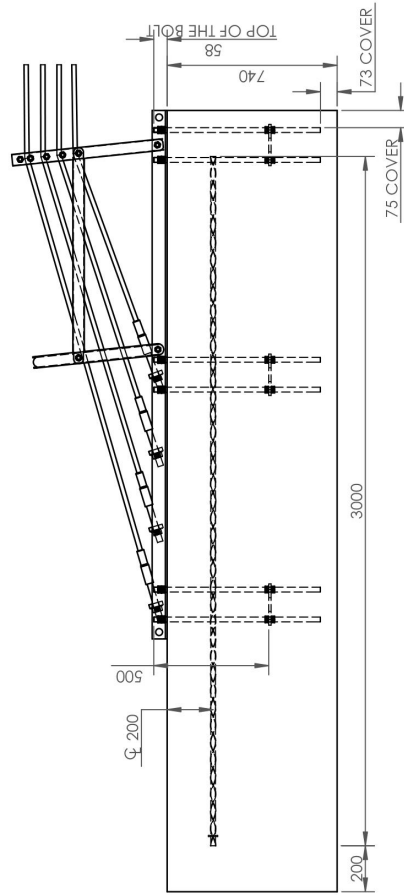
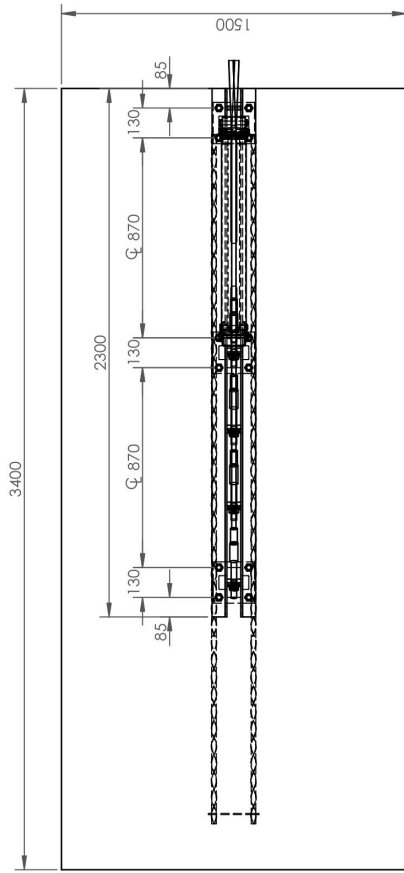
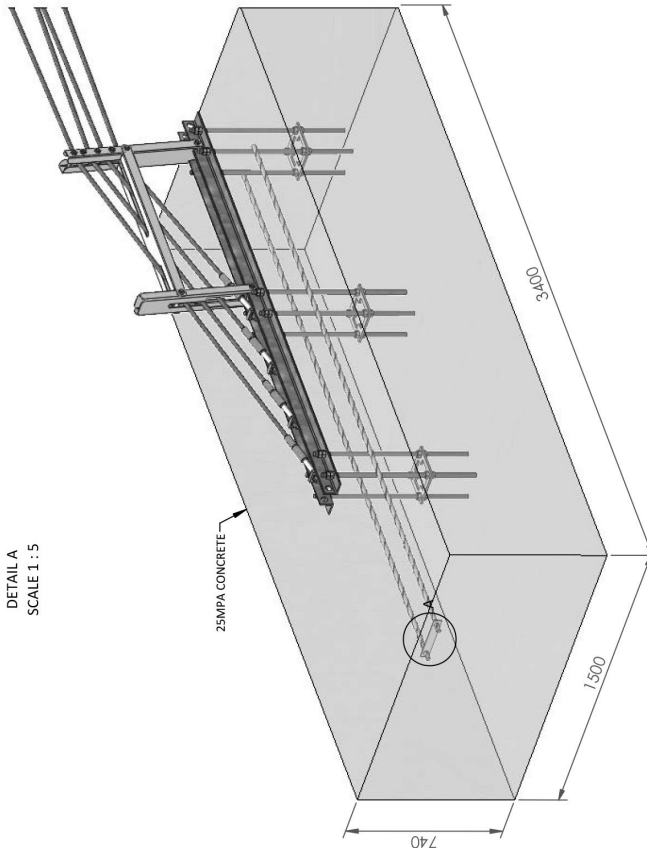
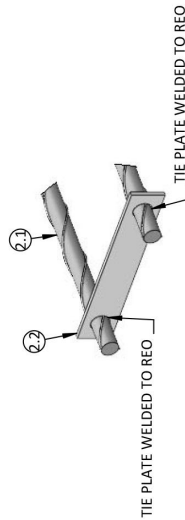


NOTES:	REVISION	REVDATE	CHANGES MADE	SCALE A3	1:20	DESCRIPTION	SL WIRE ROPE TERMINAL END UNIT WHITE - CONCRETE BLOCK OPTION 3.4M X 1M X 1M	DRAWN	S KERAI	DESIGN ALL REVISED ISSUES
				ASSEMBLY NO.	2083091ASLM			DRW NO.	FX748-4	0
				WEIGHT(Kg)				DATE	10/05/2021	REVISION

ACP
 Australian
 Construction
 Products Pty Ltd
 339 Horsley Road Milperra NSW 2214
 P.O. Box 565 Parramatta NSW 2213
 Tel: +61 9772 4172 Fax: +61 2 9736 6272

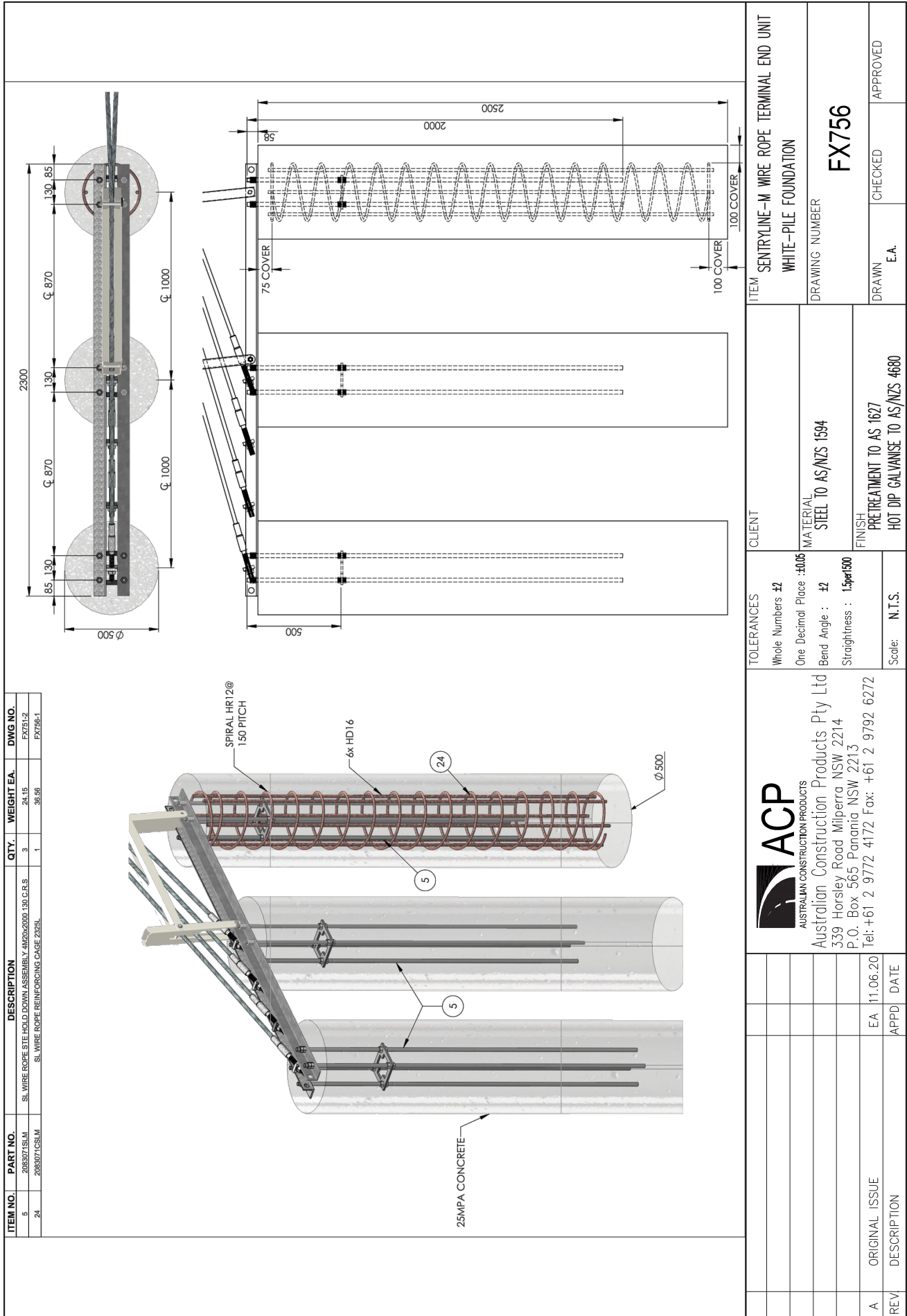
Sentryline - M[®] Wire Rope Terminal End Concrete Block Foundation Option - Alternative 2

ITEM NO.	PART NO.	DESCRIPTION	QTY.	WEIGHT EA. (KG)	DWG NO.
1	ASM-001	SL WIRE ROPE STE HOLD DOWN ASSEMBLY 4M20X725L 130CRS	3	10.3	
1.1	2110839SLM	SL WIRE ROPE STE HDA BASEPLATE 180X180X10 4M20 130C.R.S	1	1.5	FX751-1
1.2	PRT-001	BNW FULLY THREADED ROD M20X725 GALV	4	2.0	
1.3	2110161	BNW ENG NUT M20 GALV 4.6	16	0.05	
2	ASM-002	SL WIRE ROPE 3M REO BAR WELD ASSEMBLY	1	15.3	FX748-6
2.1	PRT-002	FL REO BAR HD20 3M LONG	2	7.5	
2.2	PRT-003	FL TIE PLATE 220 X 40 X 5mm BLACK	1	0.3	



NOTES:	REVISION	REV. DATE	CHANGES MADE
SCALE A3	1:20	DESCRIPTION	SL WIRE ROPE TERMINAL END UNIT WHITE 3.0M X 1.5M X 0.14
ASSEMBLY NO.	2083091CSLM	DRAWN	S KERAT
WEIGHT(Kg)		DRW NO.	FX748-5
		DATE	10/05/2021
DESTROY ALL ISSUES	0	REVISION	

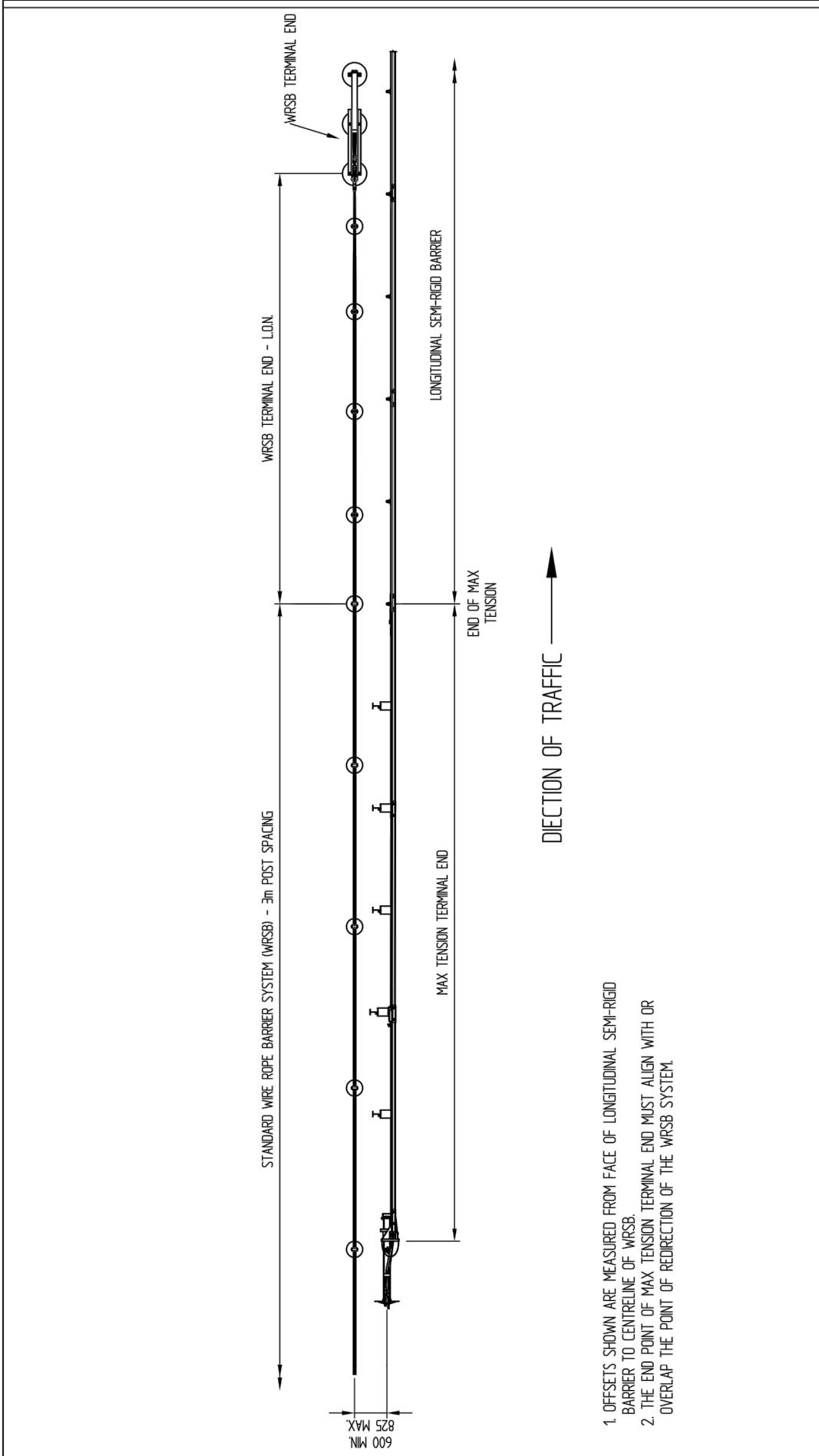
Sentryline - M[®] Wire Rope Terminal End Piled Foundation Option



ITEM NO.	PART NO.	DESCRIPTION	QTY.	WEIGHT EA.	DWG NO.
5	2083071SLM	SL WIRE ROPE STE HOLD DOWN ASSEMBLY 4020x2000x130 C.R.S.	3	24.15	FX751-2
24	2083071CSUM	SL WIRE ROPE REINFORCING CAGE 222SL	1	36.56	FX756-1

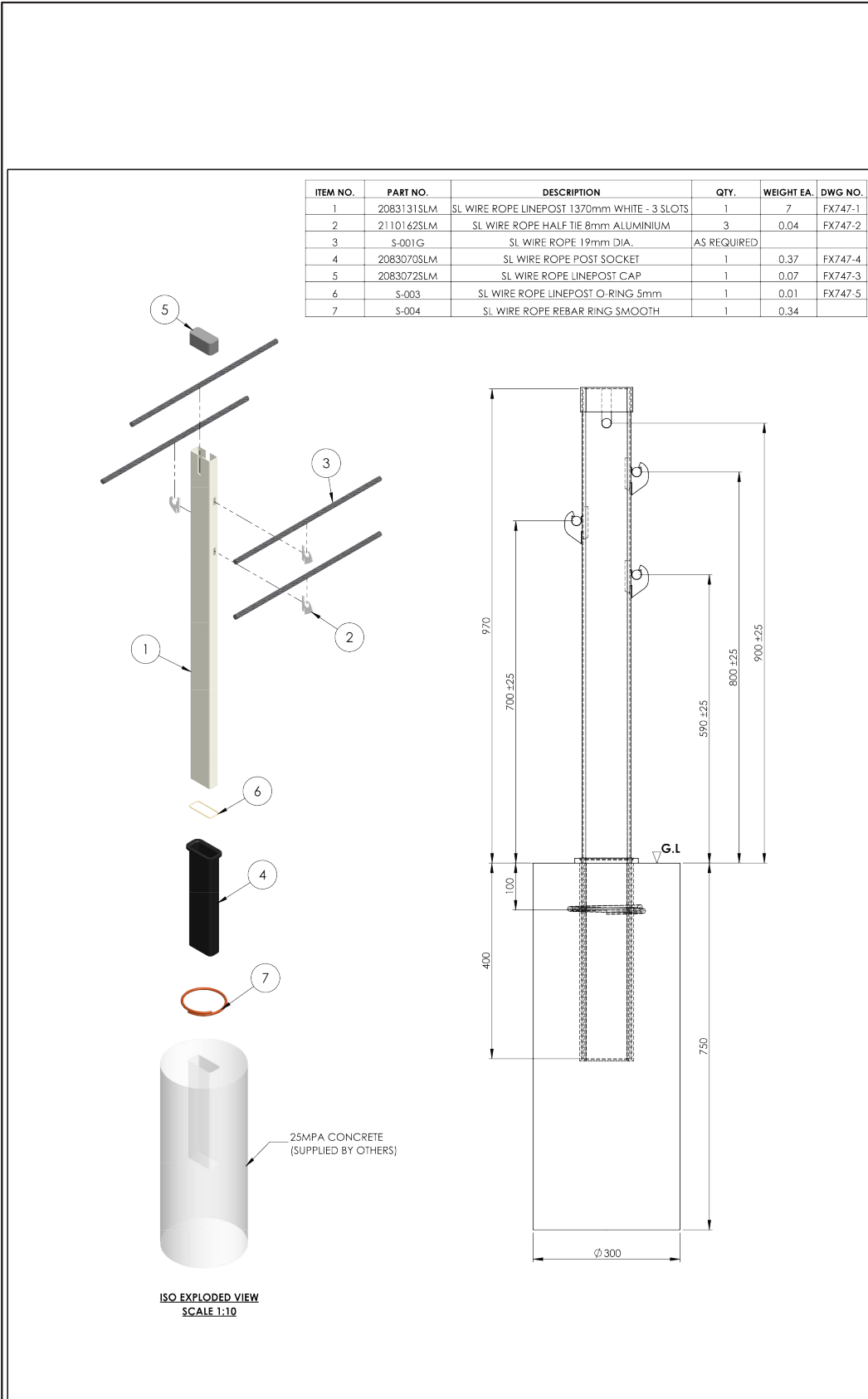
<p>ACP AUSTRALIAN CONSTRUCTION PRODUCTS Australian Construction Products Pty Ltd 339 Horsley Road Miperra NSW 2214 P.O. Box 565 Parnara NSW 2213 Tel: +61 2 9772 4172 Fax: +61 2 9792 6272</p>		<p>TOLERANCES Whole Numbers ±2 One Decimal Place ±0.05 Bend Angle : ±2 Straightness : 1.5per1500 Scale: N.T.S.</p>	<p>CLIENT MATERIAL STEEL TO AS/NZS 1594 FINISH PRETREATMENT TO AS 1627 HOT DIP GALVANISE TO AS/NZS 4680</p>	<p>ITEM SENTRYLINE-M WIRE ROPE TERMINAL END UNIT WHITE-PILE FOUNDATION</p>
<p>DRAWING NUMBER FX756</p>		<p>DRAWN E.A.</p>		<p>CHECKED APPROVED</p>
<p>A ORIGINAL ISSUE REV DESCRIPTION</p>	<p>EA 11.06.20 APPD DATE</p>			


Sentryline - M® Wire Rope Barrier to Semi-rigid Barrier Transition Detail



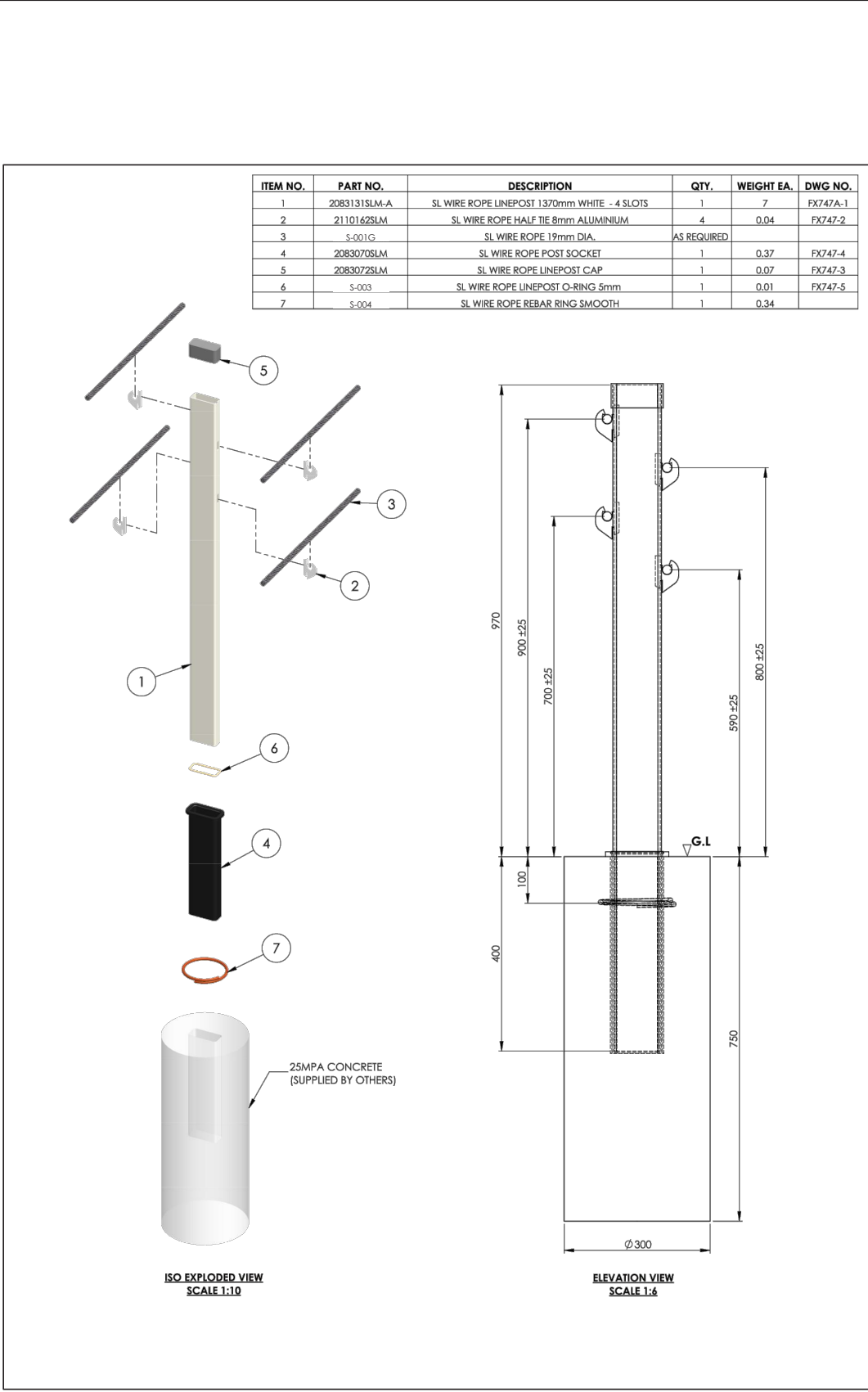
REV	DESCRIPTION	EA	11.06.20	APPD	DATE
A	ORIGINAL ISSUE				
<p>ACPD <small>AUSTRALIAN CONSTRUCTION PRODUCTS</small> Australian Construction Products Pty Ltd 339 Horsley Road Miperra NSW 2214 P.O. Box 565 Pancania NSW 2213 Tel: +61 2 9772 4172 Fax: +61 2 9792 6272</p>					
<p>TOLERANCES</p> <p>Whole Numbers : ±2</p> <p>One Decimal Place : ±0.05</p> <p>Bend Angle : ±2</p> <p>Straightness : 1.5per100</p> <p>Scale: N.T.S.</p>		<p>CLIENT</p> <p>MATERIAL</p> <p>STEEL TO AS/NZS 1594</p> <p>FINISH</p> <p>PRETREATMENT TO AS 1627</p> <p>HOT DIP GALVANISE TO AS/NZS 4680</p>		<p>ITEM</p> <p>TRANSITION FROM WIRE ROPE TO SEMI-RIGID BARRIER</p> <p>DRAWING NUMBER</p> <p>FX678-1</p> <p>DRAWN</p> <p>E.A.</p> <p>CHECKED</p> <p>APPROVED</p>	


Typical Installation for Sentryline - M® Wire Rope Barrier Line Post



ITEM	SENTRYLINE-M WIRE ROPE STANDARD	
	ASSEMBLY WHITE-3 SLOTS	
DRAWING NUMBER	FX747	
	DRAWING NUMBER	
DRAWN	E.A.	APPROVED
	FINISH	
CLIENT	STEEL TO AS/NZS 1594	
	HOT DIP GALVANISE TO AS/NZS 4680	
TOLERANCES	Whole Numbers : ±2	One Decimal Place : ±0.05
	Bend Angle : ±2	Straightness : 1.5per100
Scale:	N.T.S.	
	 ACP AUSTRALIAN CONSTRUCTION PRODUCTS Australian Construction Products Pty Ltd 339 Horsley Road Milperra NSW 2214 P.O. Box 565 Panania NSW 2213 Tel: +61 2 9772 4172 Fax: +61 2 9792 6272	
REV	DESCRIPTION	DATE
A	ORIGINAL ISSUE	EA 11.06.20
		APPD

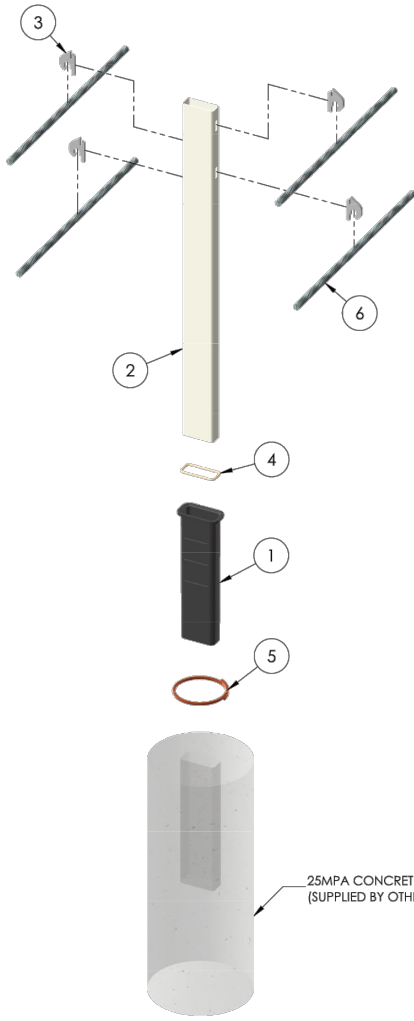
Typical Installation for Transition Line Post #6



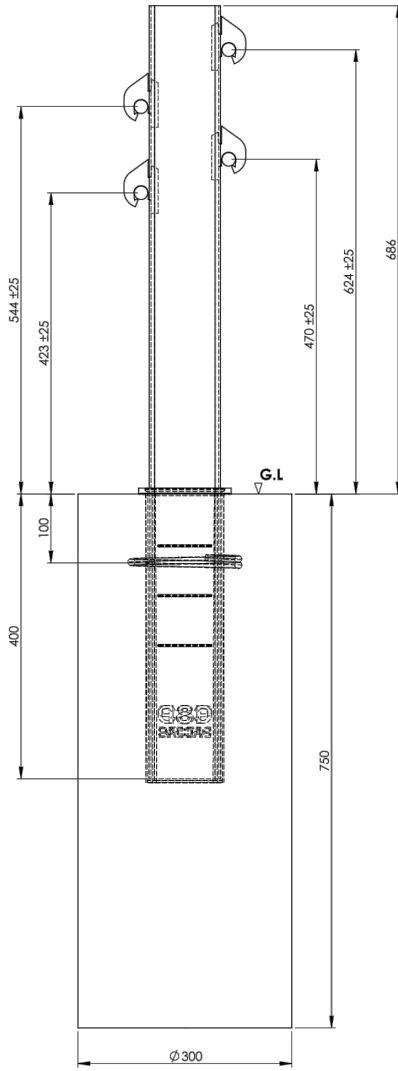
ITEM	SENTRYLINE - M WIRE ROPE STANDARD	
	ASSEMBLY WHITE - 4 SLOTS	
DRAWING NUMBER	FX754A	
	DRAWN	CHECKED
E.A.	APPROVED	
	DRAWING NUMBER	
CLIENT	AUSTRALIAN CONSTRUCTION PRODUCTS	
TOLERANCES	Whole Numbers #2 One Decimal Place #10.05 Bend Angle : #2 Straightness : 1.5per1500 Scale: N.T.S.	
MATERIAL	STEEL TO AS/NZS 1594	
FINISH	PRETREATMENT TO AS 1627 HOT DIP GALVANISE TO AS/NZS 4680	
ACPN	 AUSTRALIAN CONSTRUCTION PRODUCTS Australian Construction Products Pty Ltd 339 Horsley Road Miperra NSW 2214 P.O. Box 565 Parnara NSW 2213 Tel: +61 2 9772 4172 Fax: +61 2 9792 6272	
REV	EA	11.06.20
DESCRIPTION	APPD	DATE


Typical Installation for Transition Line Post #1 - #4

ITEM NO.	PART NO.	DESCRIPTION	QTY.	WEIGHT EA.	DWG NO.
1	2083070SLM	SL WIRE ROPE POST SOCKET	1	0.41	FX747-4
2	2083078SLM	SL WIRE ROPE STE. TRANSITION POST 1.1086mm WHITE	1	6	FX749-1
3	2110162SLM	SL WIRE ROPE HALF TIE 8mm ALUMINIUM	4	0.04	FX747-2
4	S-003	SL WIRE ROPE LINEPOST O-RING 5.33mm	1	0.01	FX747-5
5	S-004	SL WIRE ROPE REBAR RING SMOOTH	1	0.34	
6	S-001G	SL WIRE ROPE 19mm DIA.	AS REQUIRED		



ISO EXPLODED VIEW
SCALE 1:10



ITEM SL WIRE ROPE TRANSITION LINE POST #1-#5 TYPICAL ARRANGEMENT - POST #1 SHOWN		DRAWING NUMBER FX749		DRAWN E.A.	CHECKED	APPROVED
CLIENT		MATERIAL STEEL TO AS/NZS 1594		FINISH PRETREATMENT TO AS 1627 HOT DIP GALVANISE TO AS/NZS 4680		
TOLERANCES Whole Numbers ±2 One Decimal Place ±0.05 Bend Angle : ±2 Straightness : 1.5per1500 Scale: N.T.S.		 <p>ACP AUSTRALIAN CONSTRUCTION PRODUCTS Australian Construction Products Pty Ltd 339 Horsley Road Milperra NSW 2214 P.O. Box 565 Panania NSW 2213 Tel: +61 2 9772 4172 Fax: +61 2 9792 6272</p>				
EA	11.06.20	APPD	DATE	A ORIGINAL ISSUE		
REV				DESCRIPTION		

Sentryline - M[®] Wire Rope Terminal End and Sentryline - M[®] Wire Rope Barrier System General Arrangement

ITEM NO.	PART NO.	DESCRIPTION	QTY.	DWG NO.
1	2083133ISM	SL WIRE ROPE LINEPOST 1370mm WHITE - 3 SLOTS	1	FXZ47-1
2	211048SLM	SL WIRE ROPE HALF TIE 8mm ALUMINIUM	3	FXZ47-2
3	S-001G	SL WIRE ROPE 10mm DIA. AS REQUIRED		
4	2083079SLM	SL WIRE ROPE POST SOCKET	1	FXZ47-4
5	2083072SLM	SL WIRE ROPE LINEPOST CAP	1	FXZ47-3
6	S-003	SL WIRE ROPE LINEPOST O-RING 8mm	1	FXZ47-5
7	S-004	SL WIRE ROPE REBAR RING SMOOTH	1	

NOTE:
ONE TURNBUCKLE PER WIRE ROPE PER 450m. NO TWO TURNBUCKLES WITHIN 30m ON THE SAME WIRE ROPE. FOR ADDITIONAL INFORMATION SEE PRODUCT MANUAL.

DETAIL D - TURNBUCKLE ASSEMBLY
SCALE 1 : 10

DETAIL A - PLAN VIEW
END TERMINAL TO TRANSITION POSTS WIRE ROPE TRANSITION
SCALE 1 : 20

DETAIL B - PLAN VIEW
TRANSITION POST TO LINE POST WIRE ROPE TRANSITION
SCALE 1 : 20

DETAIL C - PLAN VIEW
LINE POST TO LINE POST WIRE ROPE TRANSITION
SCALE 1 : 20

TYPICAL LINEPOST DETAIL ELEVATION VIEW
SCALE 1 : 12

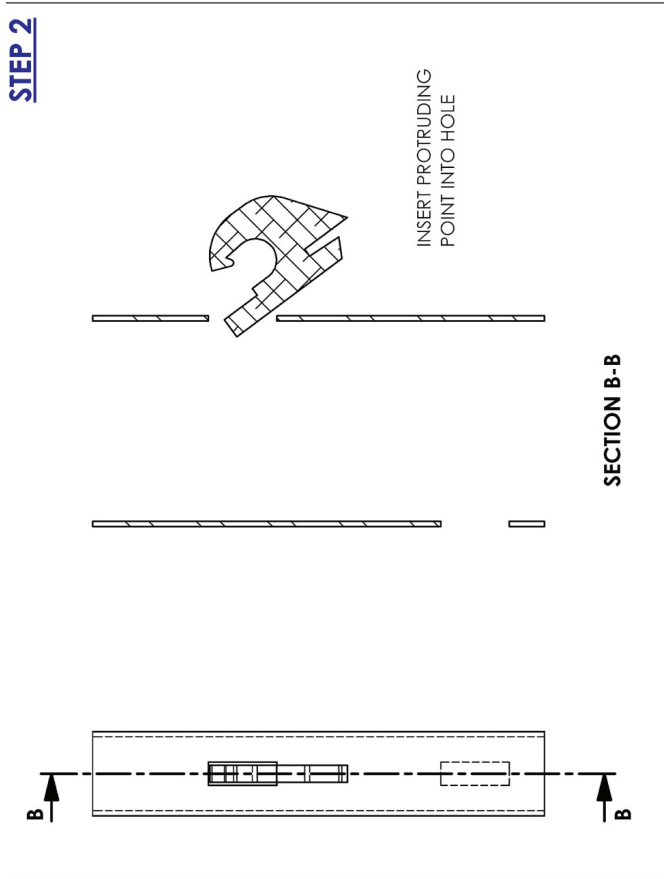
TYPICAL LINEPOST DETAIL ISO EXPLODED VIEW
SCALE 1 : 10

GENERAL ARRANGEMENT

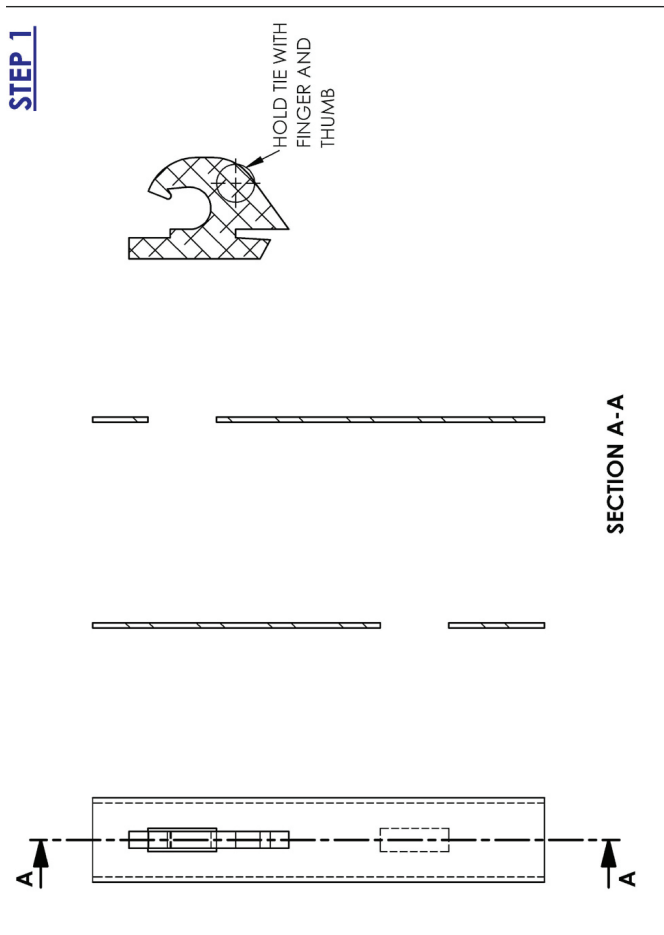
ITEM	SENTRYLINE-M WIRE ROPE SYSTEM	
CLIENT	GENERAL ARRANGEMENT	
TOLERANCES	Whole Numbers #2	One Decimal Place : ±0.05
	Bend Angle : #2	Straightness : 1.5per100
Scale:	N.T.S.	
FINISH	PRETREATMENT TO AS 1627 HOT DIP GALVANISE TO AS/NZS 4680	
MATERIAL	STEEL TO AS/NZS 1594	
DRAWING NUMBER	FX754	
DRAWN E.A.	CHECKED	APPROVED

Sentryline - M[®] Wire Rope Terminal End Half Tie Installation Procedure

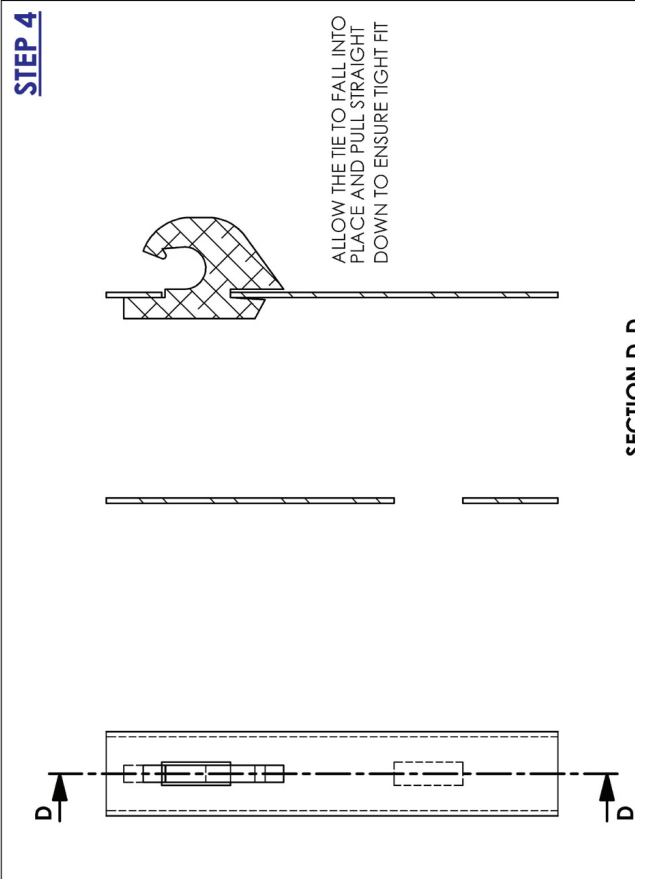
STEP 1



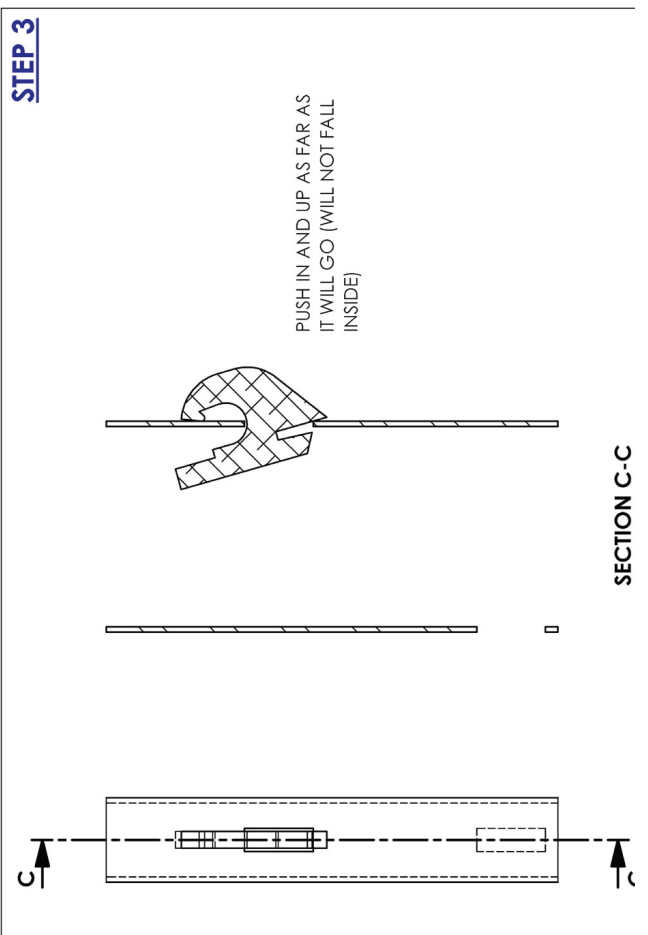
STEP 2



STEP 3

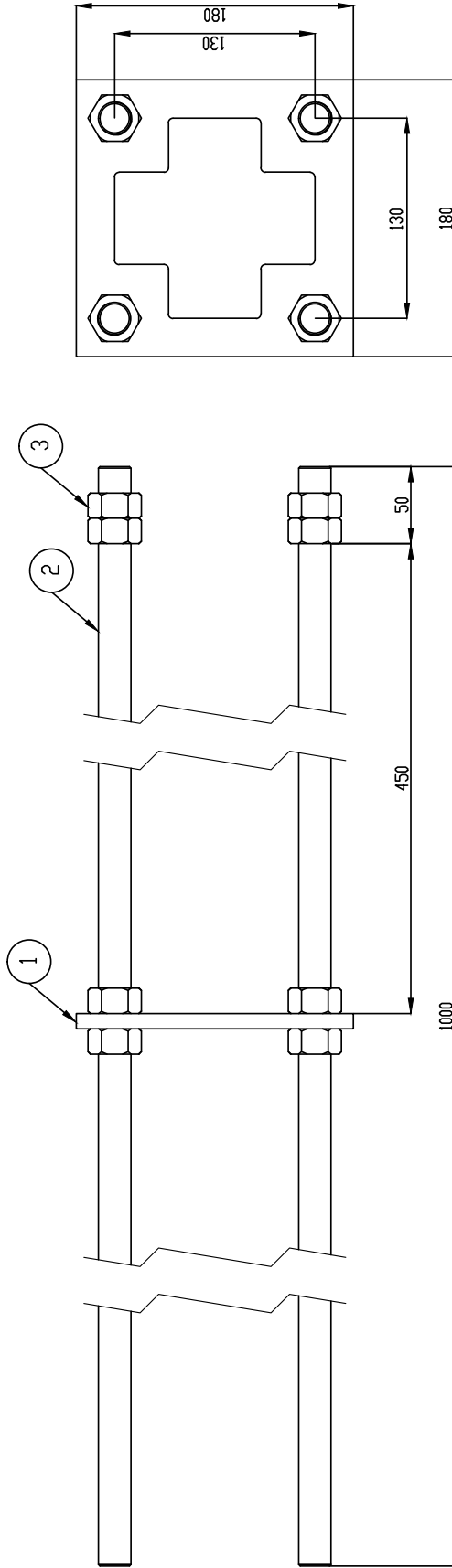


STEP 4




Sentryline - M® Wire Rope System Hold Down Assembly 4xM20x1000L 130CRS

ITEM NO.	PART NO.	DESCRIPTION	QTY.	WEIGHT EA.	DWG NO.
1	2110839SLM	SL WIRE ROPE STE HDA BASEPLATE 180x180x10 4M20 130CRS	1	1	FX751-1
2	2110230G	BNW FULLY THREADED ROD M20x1000 GALV	4	3	
3	2110161	BNW ENG NUT M20 GALV 4.6	16	0.05	



REV	DESCRIPTION	EA	DATE
A	ORIGINAL ISSUE		02.11.20
		APPD	

 ACP <small>AUSTRALIAN CONSTRUCTION PRODUCTS</small> Australian Construction Products Pty Ltd 339 Horsley Road Miperra NSW 2214 P.O. Box 565 Panania NSW 2213 Tel: +61 2 9772 4172 Fax: +61 2 9792 6272		CLIENT SENTRYLINE-M WIRE ROPE SYSTEM STE HOLD DOWN ASSEMBLY 4M20x1000L 130CRS
TOLERANCES Whole Numbers #2 One Decimal Place #0.05 Bend Angle : #2 Straightness : 1.5per100 Scale: N.T.S.	MATERIAL STEEL TO AS/NZS 1594 FINISH	DRAWING NUMBER FX751
DRAWN E.A.	CHECKED	APPROVED

